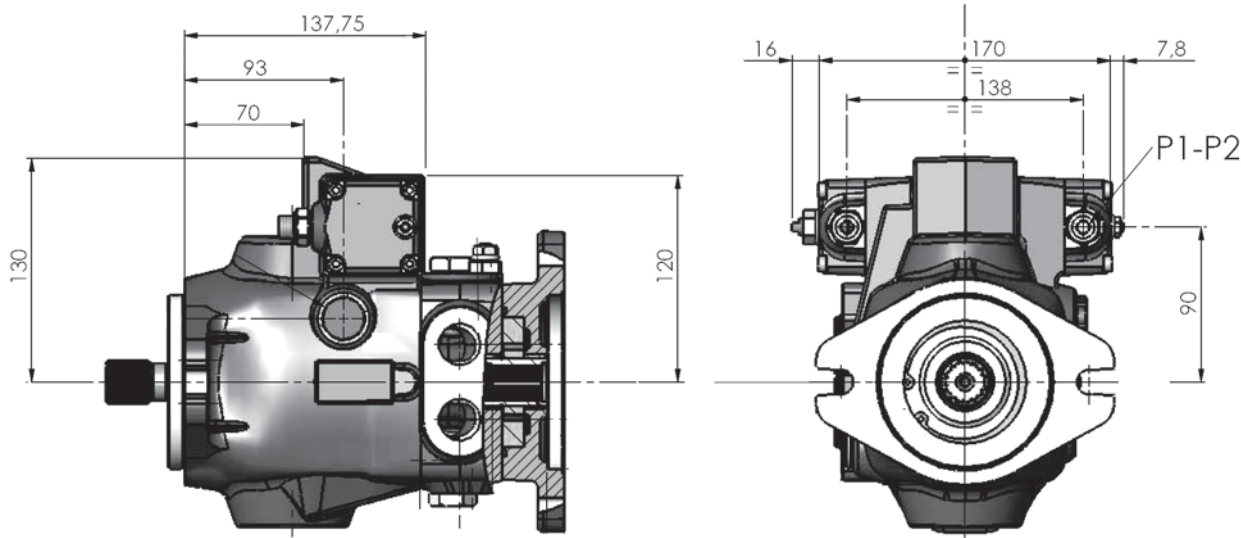


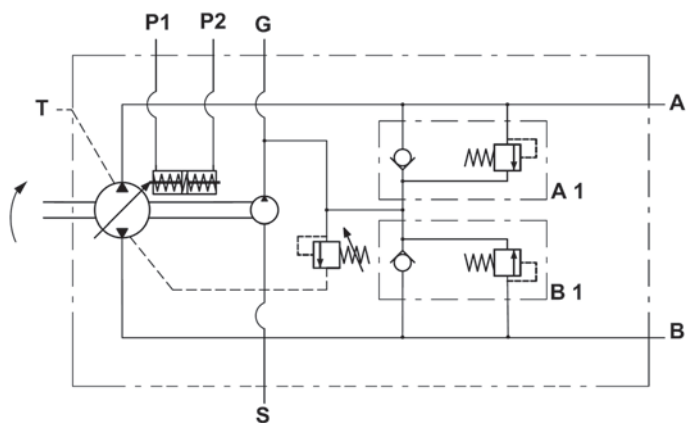
**CONTROL DEVICES**

**Hydraulic Remote Servo-Control SHI**

The displacement pump variation is obtained by adjusting the pressure on the P1 and P2 servo control connections by means of a hydraulic proportional joystick (containing pressure reducing valves). The servo control supply can be obtained by taking pressure from the charge pump (G connection). The servo control return time can be adjusted by inserting a restrictor on the joystick supply line. The servo control operation curve in both control directions goes from 2 to 12 bar (tolerance +- 5%) The adjustment curve of the hydraulic joystick has to be (2-12 bar) plus with final step.

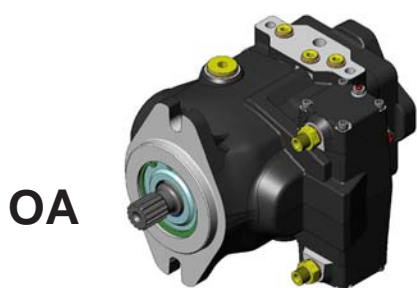


Hydraulic diagram



| TPV 4000 CONNECTIONS |                     |          |
|----------------------|---------------------|----------|
| A-B                  | SERVICES            | 3/4" BSP |
| T                    | DRAIN               | 1/2" BSP |
| S                    | SUCTION             | 3/4" BSP |
| G                    | CHARGE SYSTEM       | 1/4" BSP |
| P1-P2                | SERVO CONTROL PORTS | 1/4" BSP |

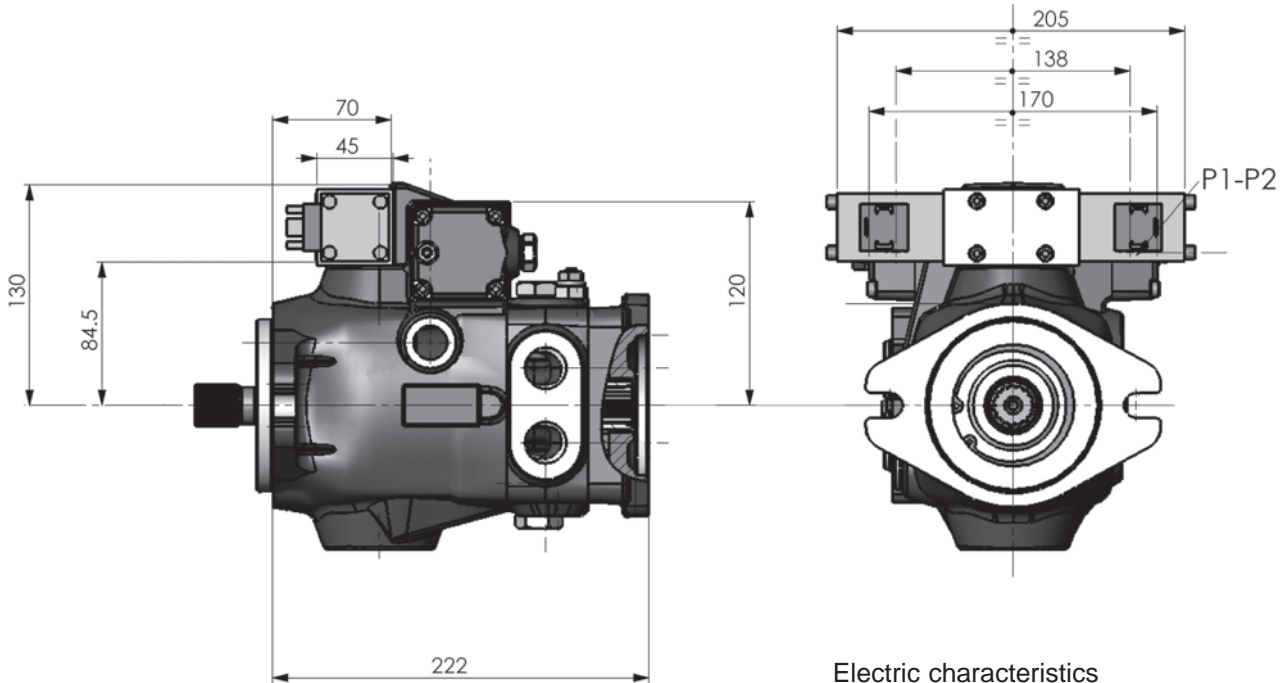
**Hydraulic Remote Servo-Control Position**



**CONTROL DEVICES**

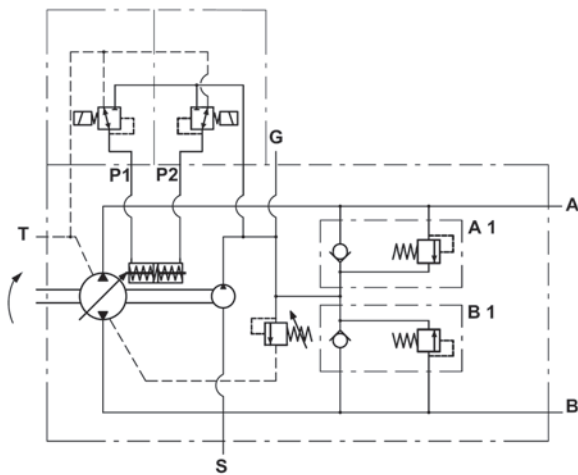
**Electric Remote Servo-Control SEI**

The pump displacement variation is obtained by an electric signal, which varies from 0 to 800 mA (supply voltage 24 V dc) or from 0 to 1600 mA (supply voltage 12 V dc)



Hydraulic diagram

Electric characteristics



| SPECIFICATIONS                  |              |
|---------------------------------|--------------|
| Max. pilot pressure             | 50 bar       |
| Sealing                         | NBR          |
| Available voltage               | 12-24 V dc   |
| Coil resistance                 | 12 V: 5,1 Ω  |
|                                 | 24 V: 20,4 Ω |
| Max. current 12 V dc            | 1.600 mA     |
| Max. current 24 V dc            | 800 mA       |
| Hysteresis                      | 0,05         |
| PWM                             | 120 Hz       |
| Protection index with connector | IP 65        |

**Electric Remote Servo-Control Position**

