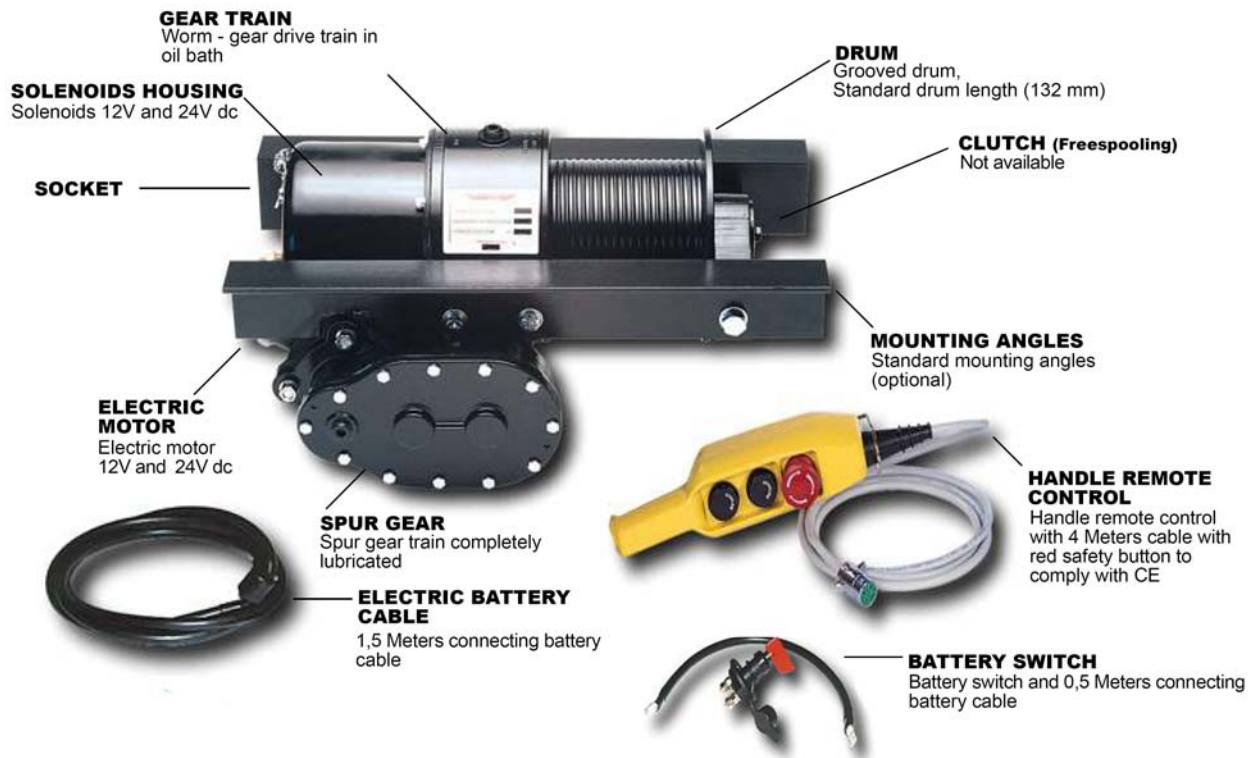


Electric Winch JES 1.300 - 1.000 Electric worm gear and spur gear winch



SPECIFICATIONS

- Rated line pull
 - for model JES 1.000 : **1.000 kg**
 - for model JES 1.300 : **1.300 kg**
- Electric motor d.c. : **12 V d.c. / 24 V d.c.**
- Worm and gear train with spur gear reduction.
- (CE) Industrial remote control includes cable (4 m. long).
- Weight without cable = **34 kg**



- DANGER :

Do not use winch to lift support or otherwise transport personnel.

Electric Winch JES 1.300 - 1.000 Electric worm gear and spur gear winch

Technical data

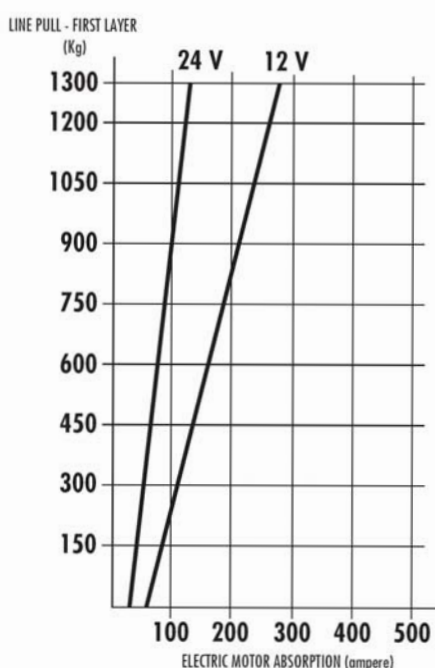
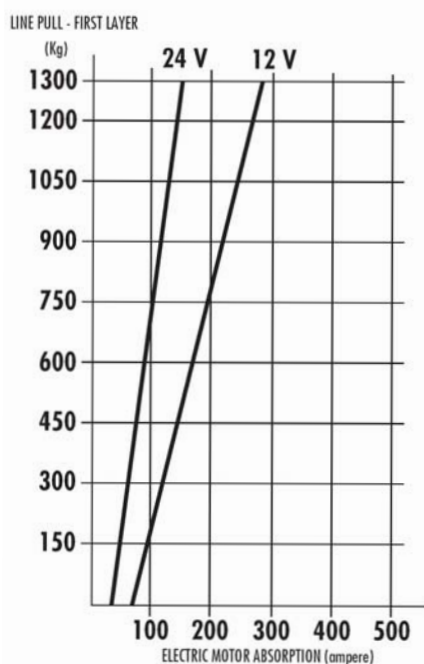
MODEL - RATIO	WIRE ROPE SIZE	LAYER	LINE PULL
	mm.		kg
JES 1.300 - 1:470	6	1	1300
		2	1190
		3	1100
		4	1020
		5	-
JES 1.000 - 1:360	6	1	1000
		2	915
		3	845
		4	785
		5	-

DRUM	WEIGHT WITHOUT CABLE	WIRE ROPE CAPACITY	MAX. WIRE ROPE CAPACITY
		m	m
	kg	6 mm.	6 mm.
	34	20	30

VOLT	RATIO	NO LOAD		1000 kg		1300 kg	
		SPEED m/min.	AMP.	SPEED m/min.	AMP.	SPEED m/min.	AMP.
12	1:360	7.5	65	2.5	270	-	-
	1:470	6.5	70	-	-	2.1	280
24	1:360	7.5	32	2.5	135	-	-
	1:470	6.5	35	-	-	2.1	140

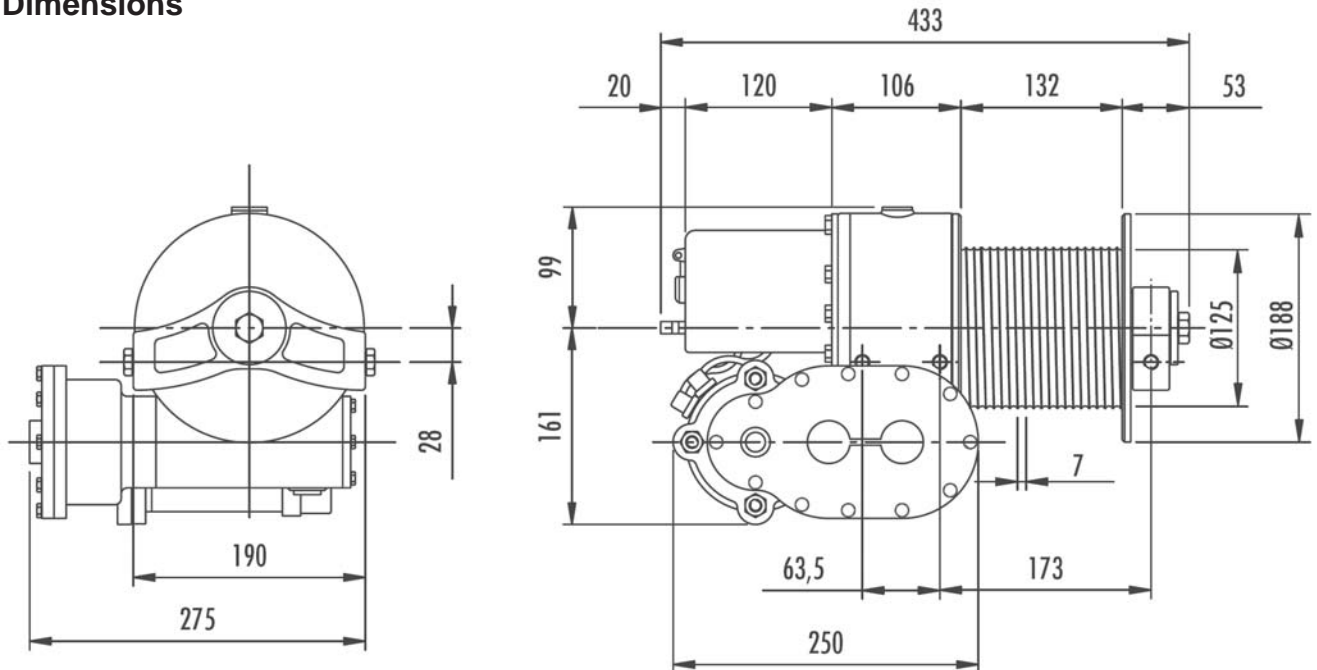
These performance data are based on line pull-first layer.

Performance charts at the 1° layer

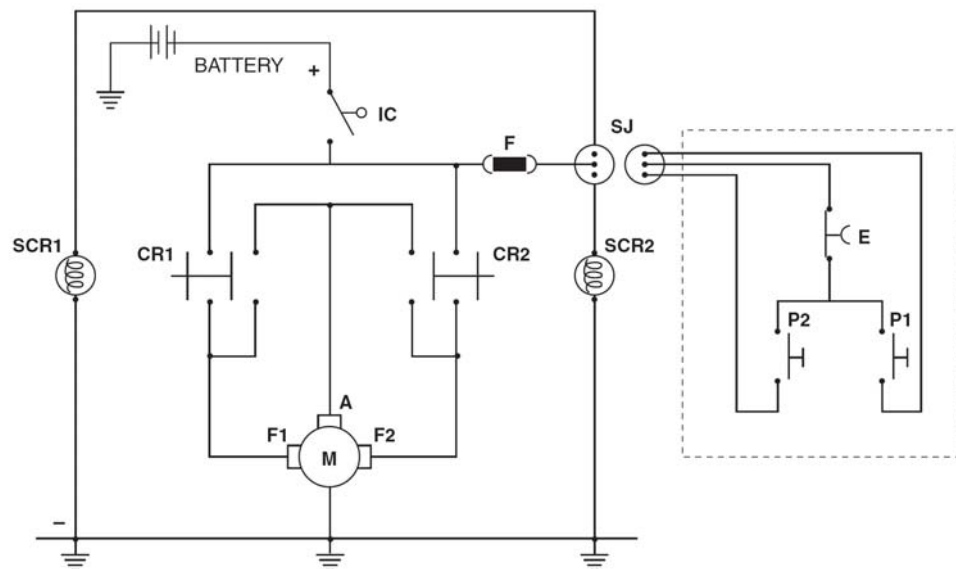


Electric Winch JES 1.300 - 1.000 Electric worm gear and spur gear winch

Dimensions



Electric wiring diagram



IC = BATTERY MAIN SWITCH
 CR1 = SOLENOID
 1CR2 = SOLENOID 2
 M = ELECTRIC MOTOR
 E = SAFETY STOP BUTTON

P1-P2 = "WINDING/UNWINDING" BUTTONS
 SCR1 = SOLENOID COIL CR1
 SCR2 = SOLENOID COIL CR2
 F = FUSIBLE PLUG 15A
 SJ = SELF-LOCKING PLUG