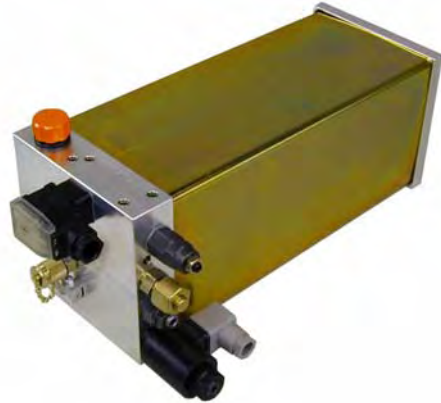


Document title: Datasheet ZPU 30
Created by: R. Otto
Date: 8.5.2003

Description

Hydraulic-powerunit with increased power density. Electric drive and pump are inserted in the oil reservoir; the multi-functional base plate integrates the control elements and components for filling, level control and electricity supply.

NEW: E-Motor-Connection by plug !



Application

Thanks to its compact design, it suits perfectly for the use with lifting tables, car lifts, stroke roofs, hydraulic support equipment or similar applications. It can be used as clamping pressure supply in machine tools as well.

Because of the special design, these units suit for intermittent operation, i.e. continuous operation is only possible with reduced power. Unless nothing else is indicated, the power rating for the operating mode S3-10% is valid

Installation position: horizontal or vertical

Advantages

- + Small dimensions (p.t.o.)
- + High power density
- + Easy installation
- + Favourable price due to serial production
- + Various types are available at short notice
- + Quick interchange thanks to the electric plug connection
- + Increased quality

Technical data

Operating voltage: 400 V, 50 Hz, 3 ~

Rated current: 6,8A

Line pressure: up to 500 bar

Further data according to the type code

Type code:

ZPU30 XX XX XXXX XX X X

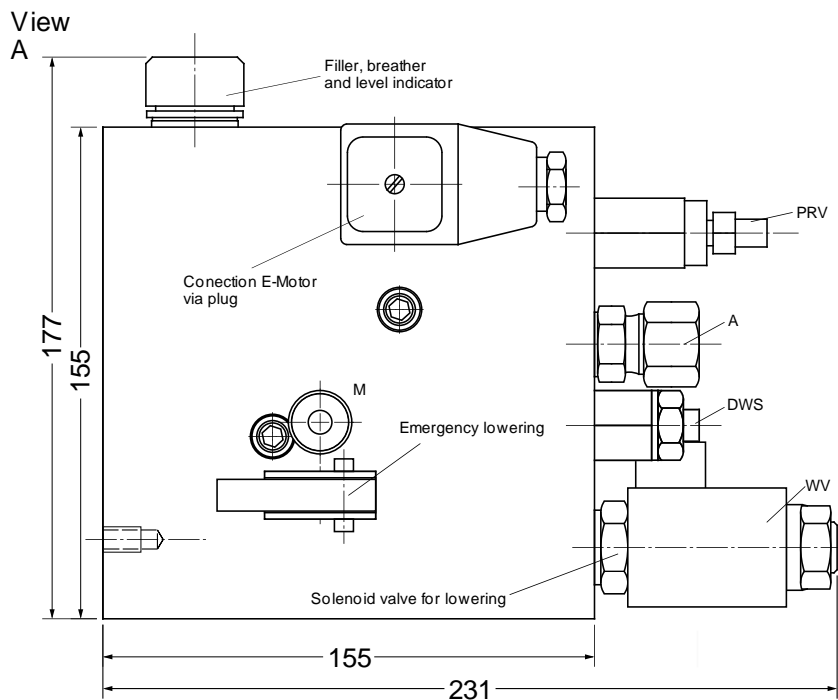
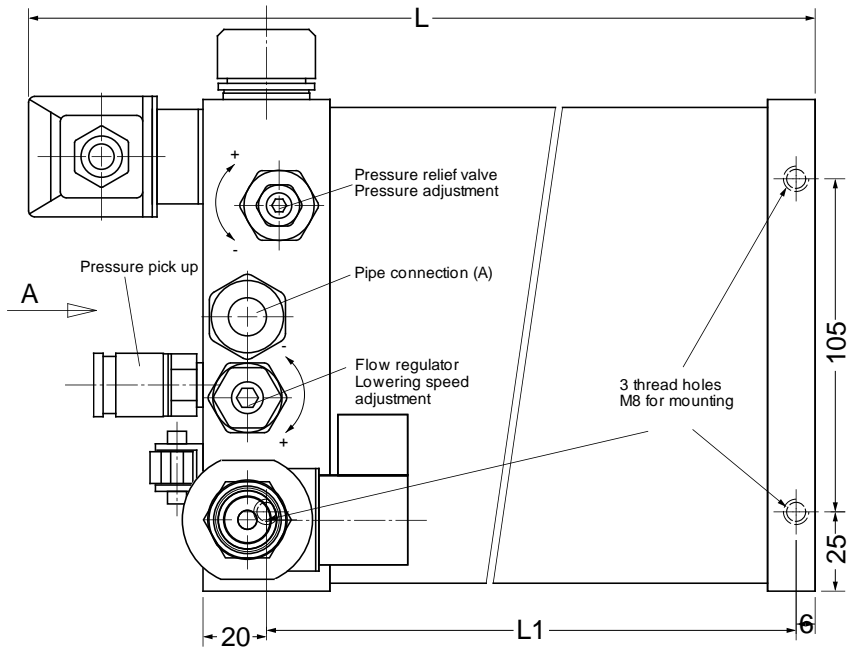
Reservoir useful volume		Pump capacity / max. operating Pressure		Control voltage		Hydraulic circuit	Installation position		Issue
25	2,5 L	02	2,2 L/min 230 bar	230A	230V AC	see page 3 - 6	V	Vertical	
45	4,5 L	03	3,4 L/min 230 bar	024A	24V AC		H	Horizontal	
65	6,5 L	04	4,5 L/min 230 bar	024D	24V DC				
85	8,5 L	06	5,6 L/min 230 bar						
		07	7,0 L/min 230 bar						
		09	9,0 L/min 200 bar						
		10	10,6 L/min 170 bar						

Type of Example: ZPU30 45 04 230A AJ H 1

Document title: Datasheet ZPU 30

Created by R. Otto

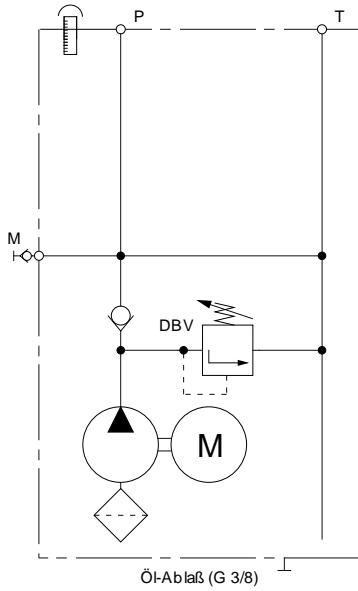
Date: 8.5.2003



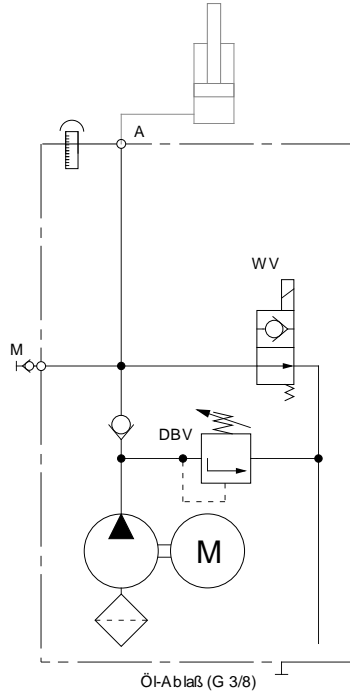
The dimensions shown refer to type: ZPU30 3 04 230A AJ H 1

Dimensions			
Type	ZPU 30 3 ...	ZPU 30 5 ...	ZPU 30 7 ...
Reservoir capacity	3,5 Ltr	5,4 Ltr	7,6 Ltr
Useful volume	2,5 Ltr	4,5 Ltr	6,5 Ltr
Length overall L	441 mm	533 mm	638 mm
Length L1	360 mm	452 mm	557 mm

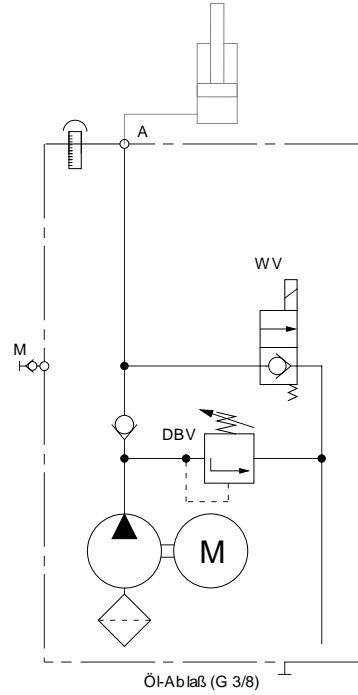
Circuit Code: AA



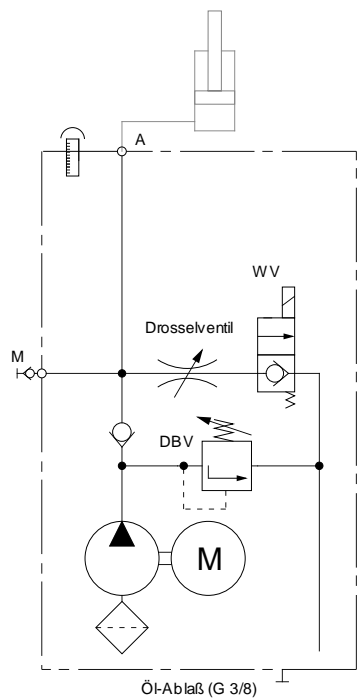
Circuit : AB



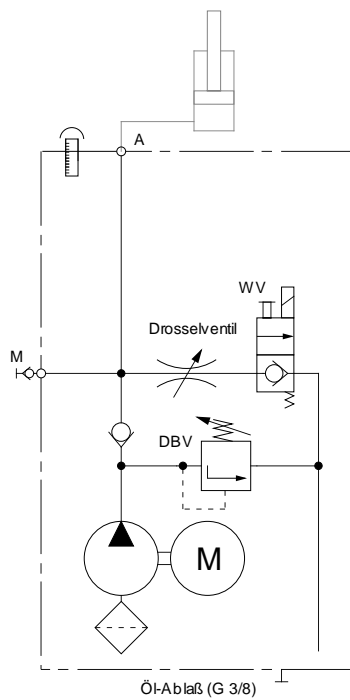
Circuit Code: AC



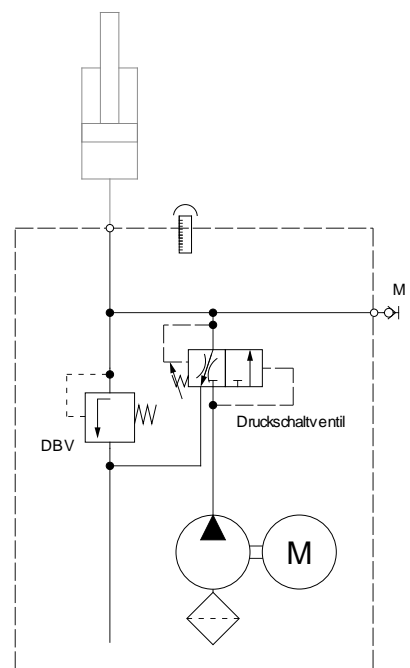
Circuit Code: AD



Circuit Code: AE



Circuit Code: AF

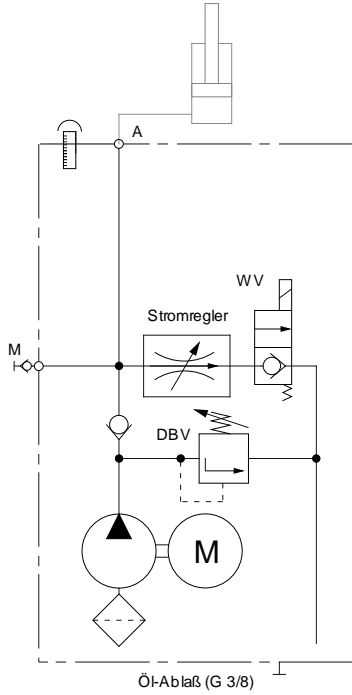


Document title: Datasheet ZPU 30

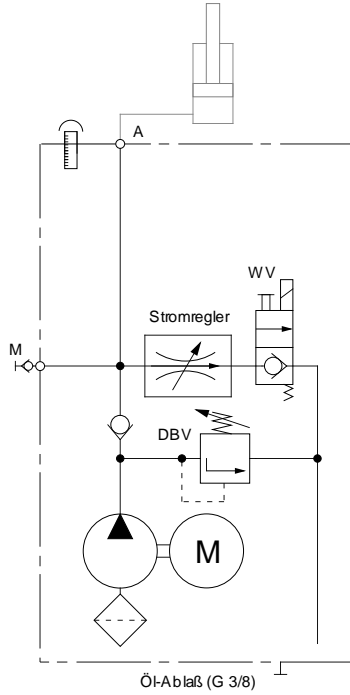
Created by R. Otto

Date: 8.5.2003

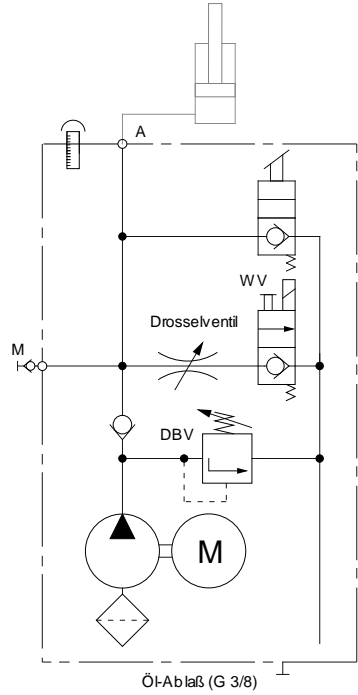
Circuit Code: AG



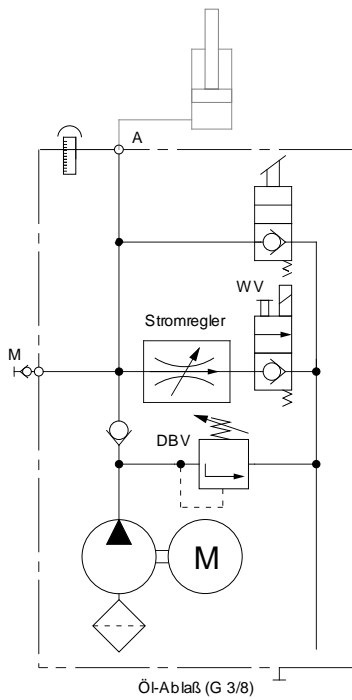
Circuit Code: AH



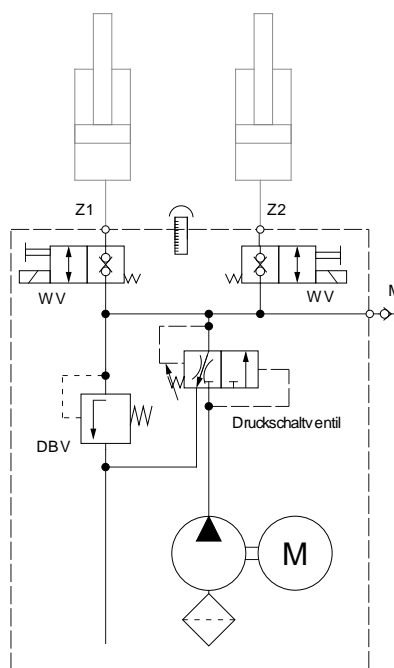
Circuit Code: AI



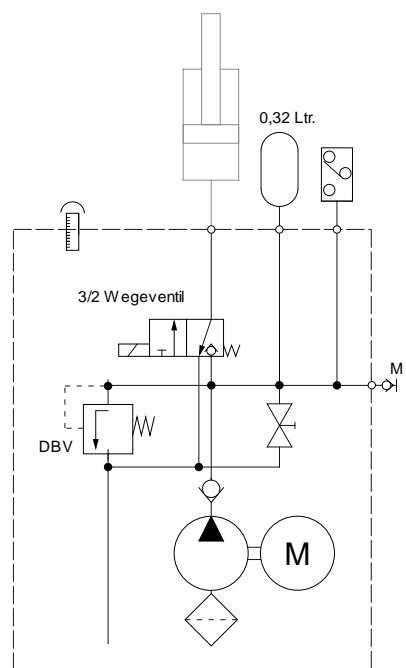
Circuit Code: AJ



Circuit Code: AK



Circuit Code: AL

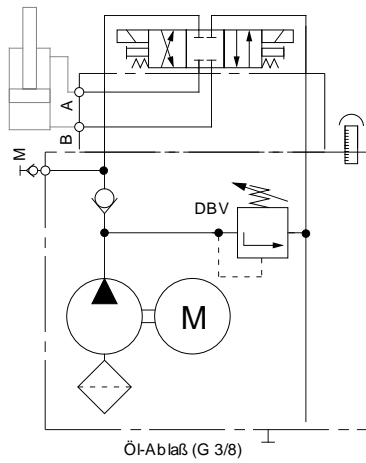


Document title: Datasheet ZPU 30

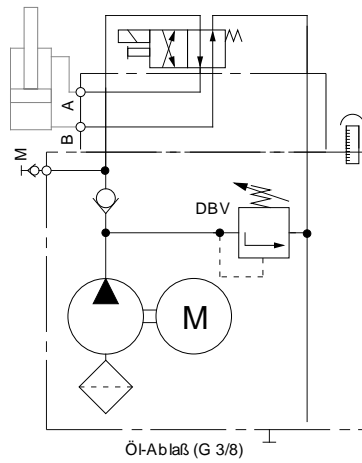
Created by R. Otto

Date: 8.5.2003

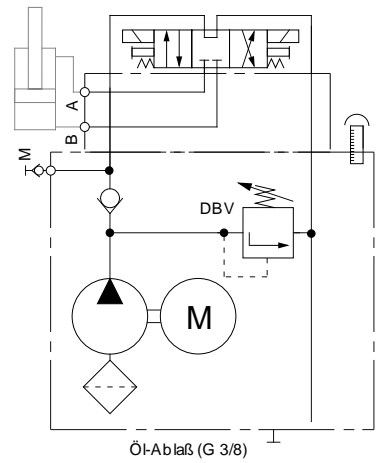
Circuit Code: AM



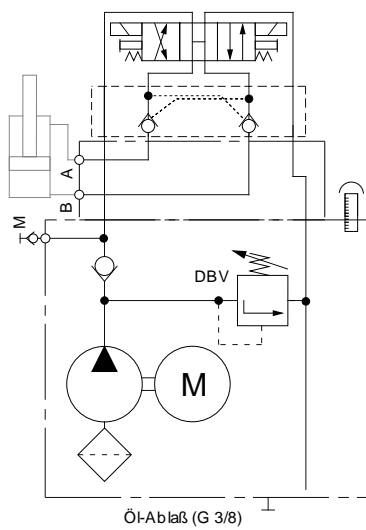
Circuit Code: AN



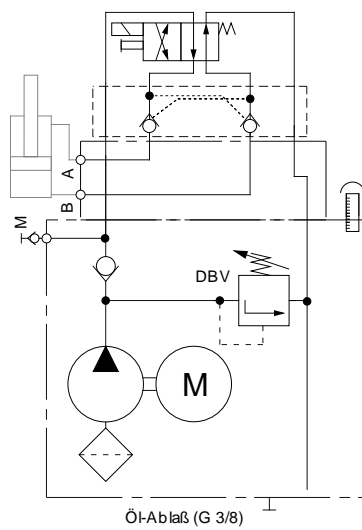
Circuit Code: AO



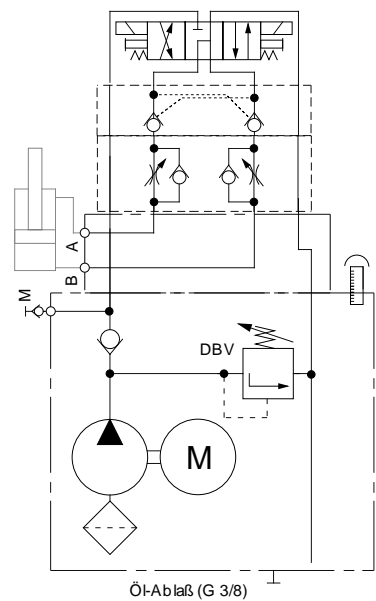
Circuit Code: AP



Circuit Code: AQ



Circuit Code: AR

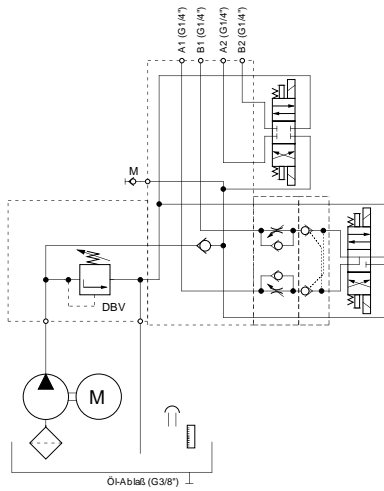


Document title: Datasheet ZPU 30

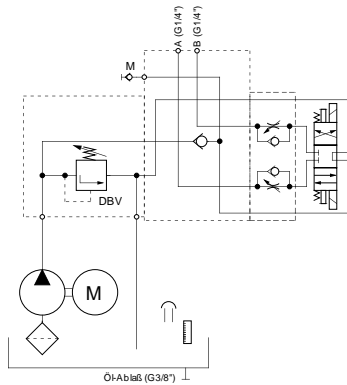
Created by R. Otto

Date: 8.5.2003

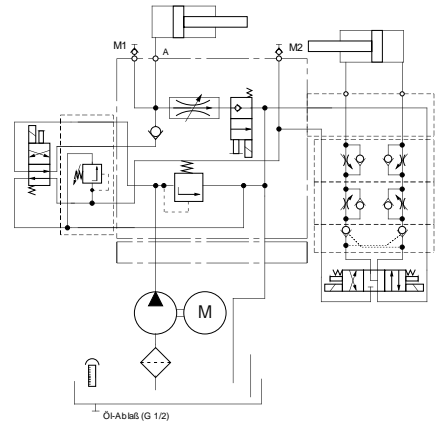
Circuit Code: AS



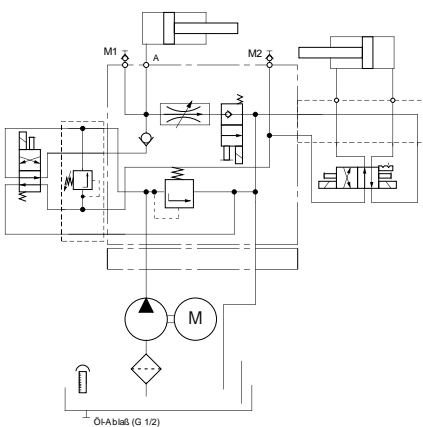
Circuit Code: AT



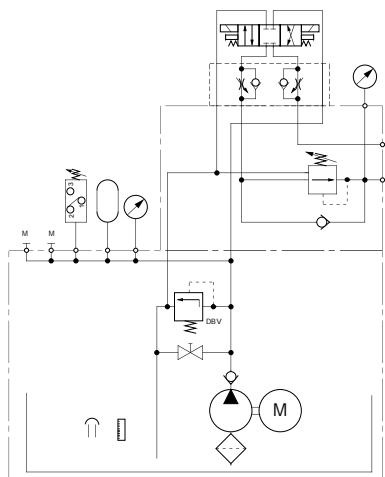
Circuit Code: AU



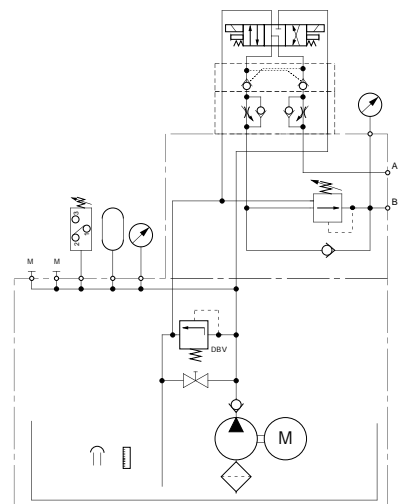
Circuit Code: AV



Circuit Code: AW

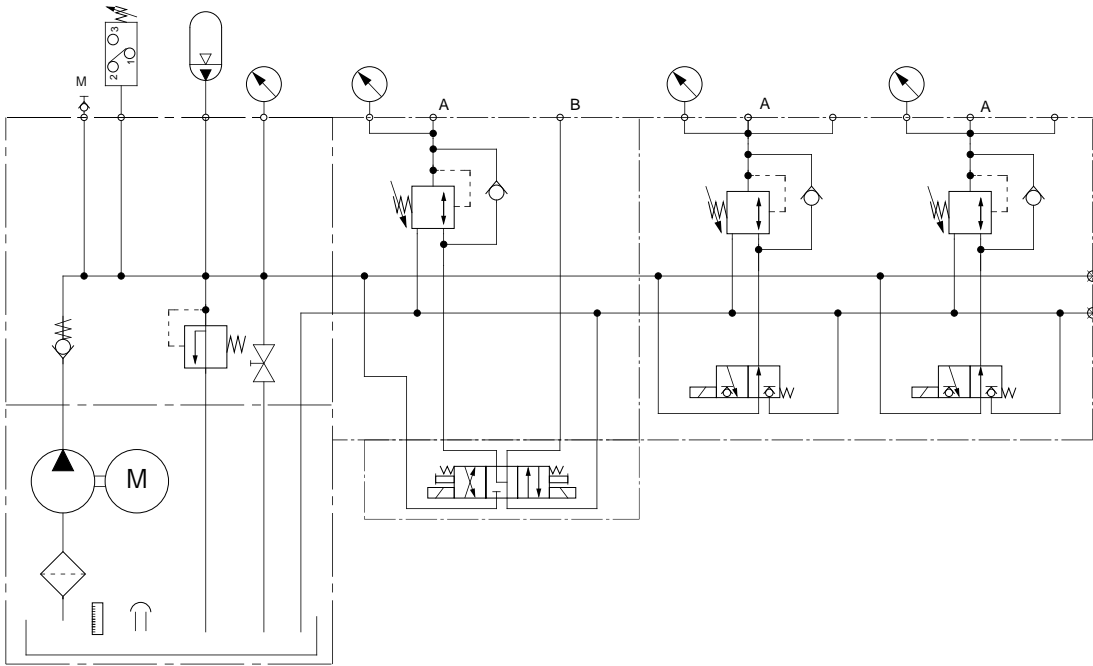


Circuit Code: AX

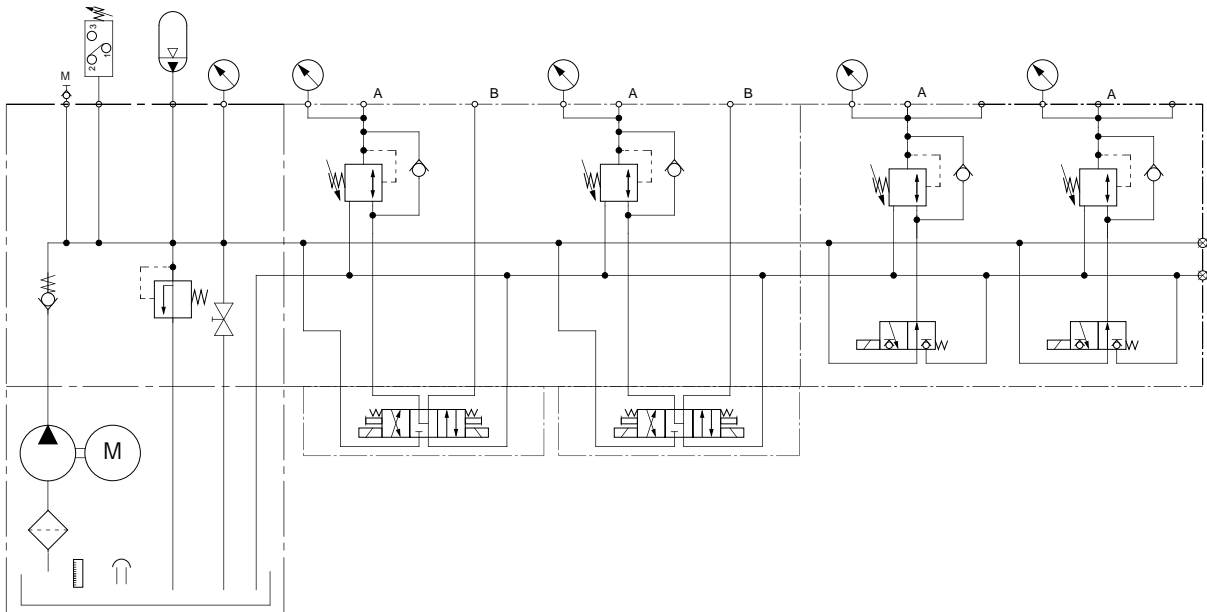


Document title: Datasheet ZPU 30
 Created by: R. Otto
 Date: 8.5.2003

Circuit Code: AY



Circuit Code: AZ

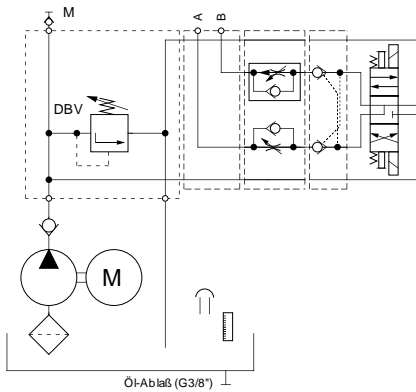


Document title: Datasheet ZPU 30

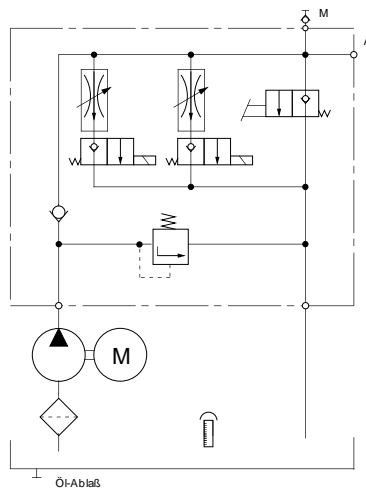
Created by R. Otto

Date: 8.5.2003

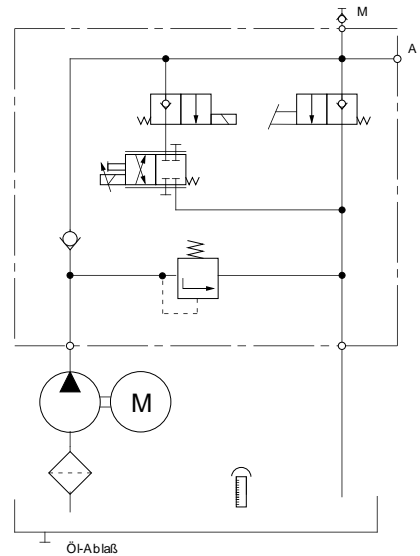
Circuit Code: BA



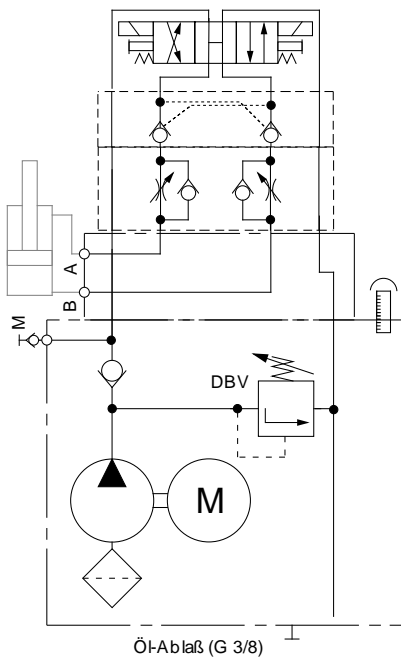
Circuit Code:BB



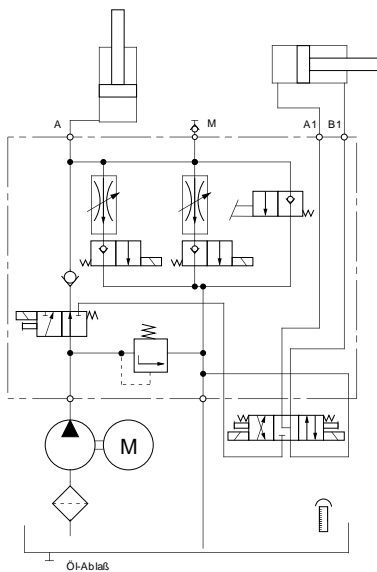
Circuit Code: BC



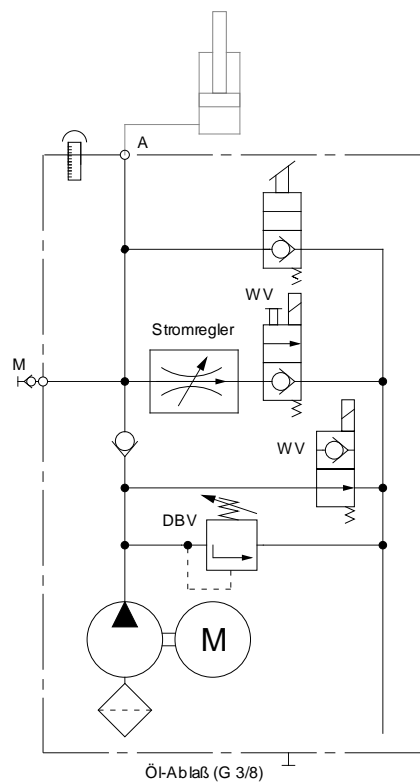
Circuit Code: BD



Circuit Code: BE



Circuit Code: BF

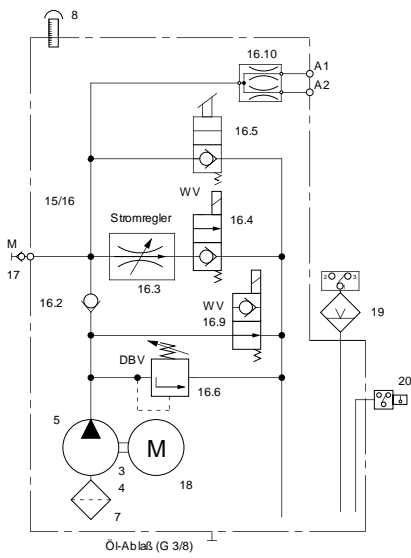


Document title: Datasheet ZPU 30

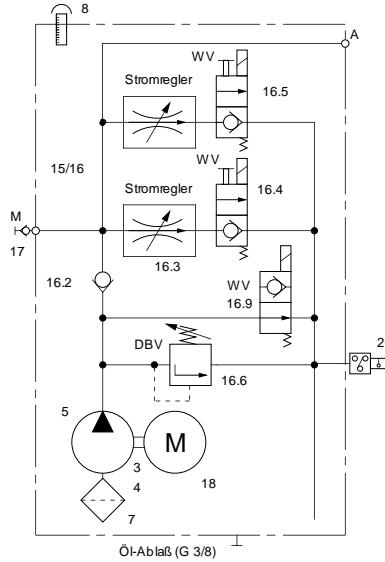
Created by R. Otto

Date: 8.5.2003

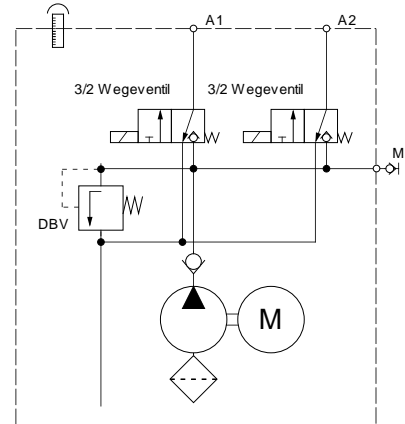
Circuit Code: BG



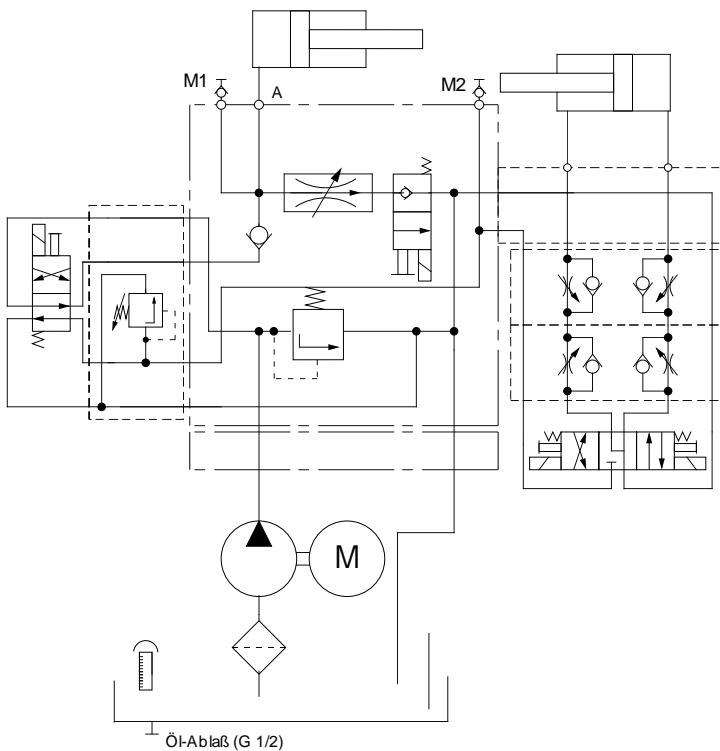
Circuit Code: BH



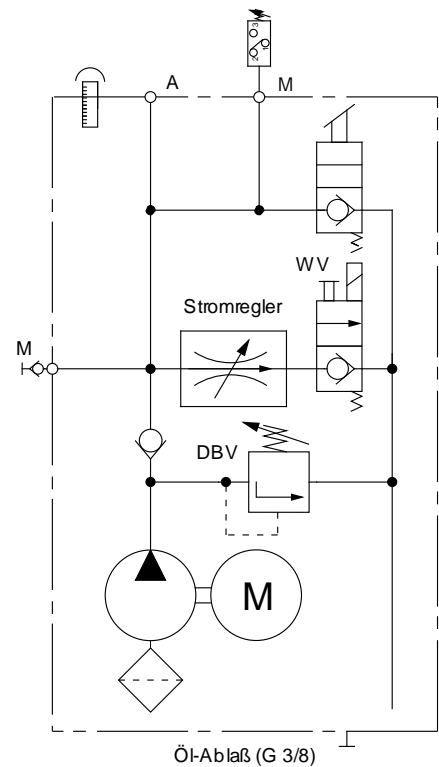
Circuit Code: BI



Circuit Code: BJ



Circuit Code: BL

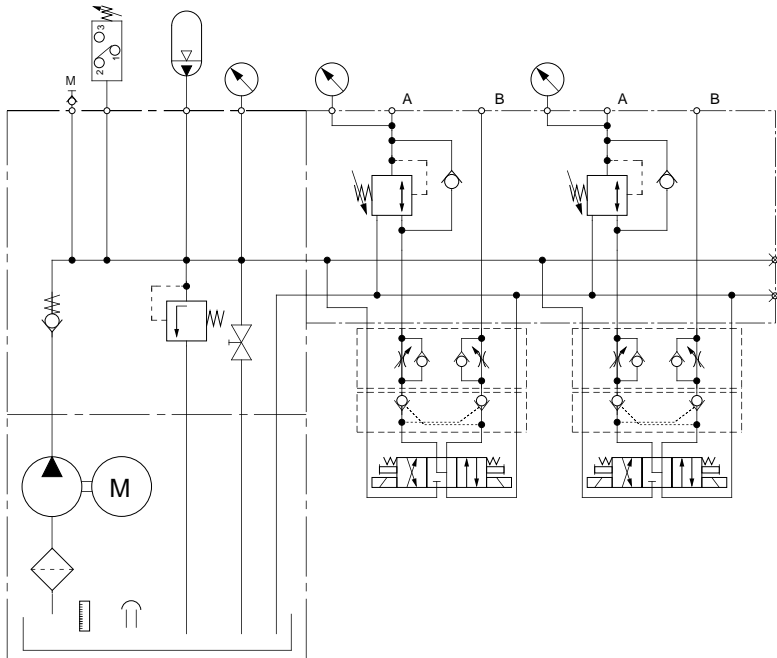


Document title: Datasheet ZPU 30

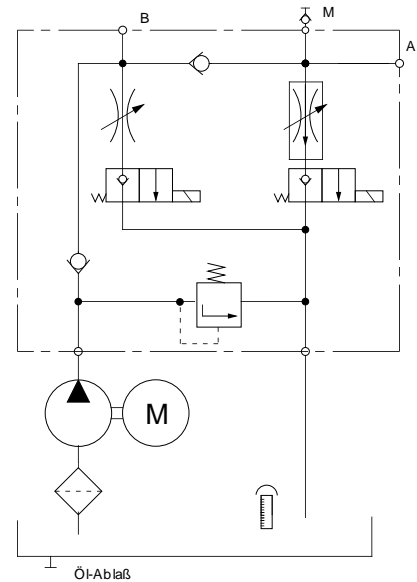
Created by R. Otto

Date: 8.5.2003

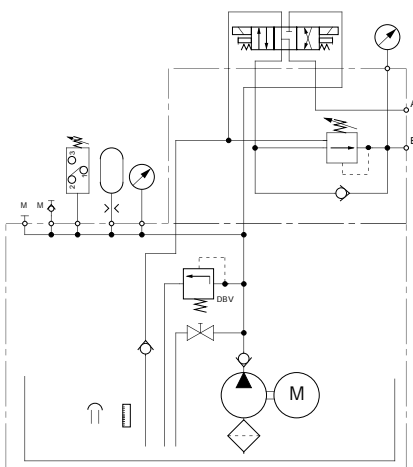
Circuit Code: BK



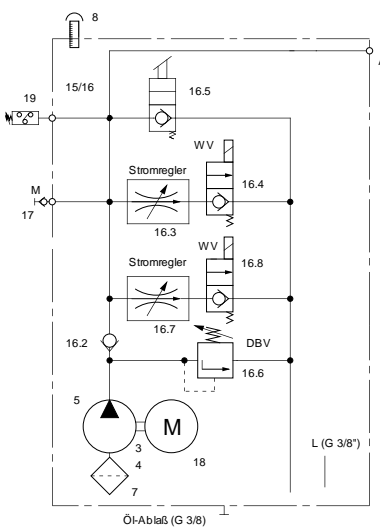
Circuit Code: BM



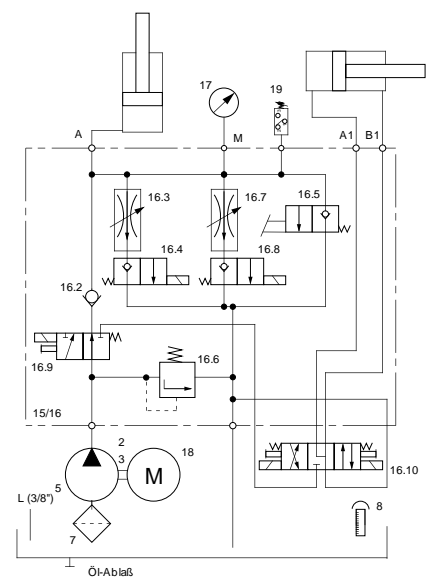
Circuit Code: BN



Circuit Code: BO



Circuit Code: BP

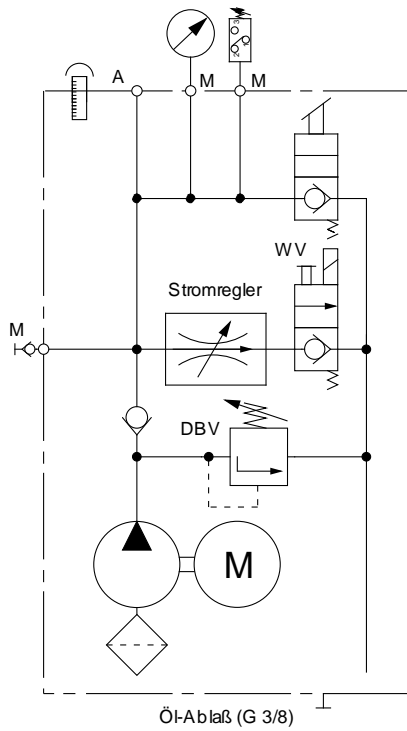


Document title: Datasheet ZPU 30

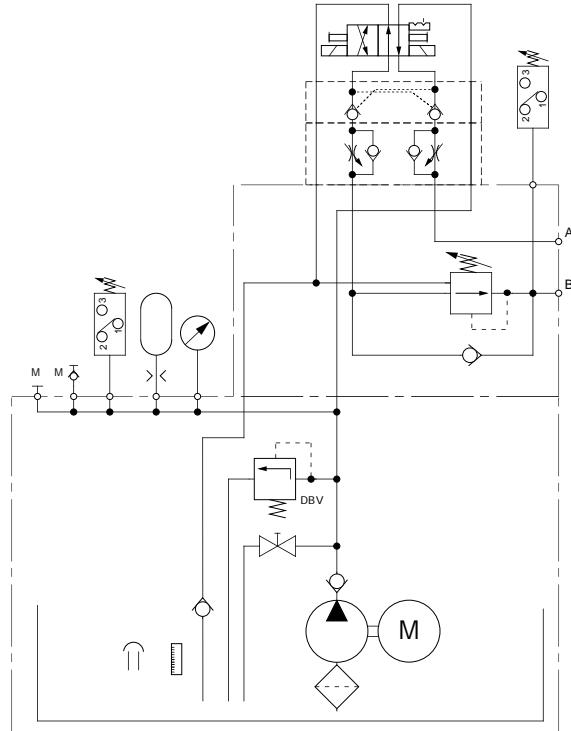
Created by R. Otto

Date: 8.5.2003

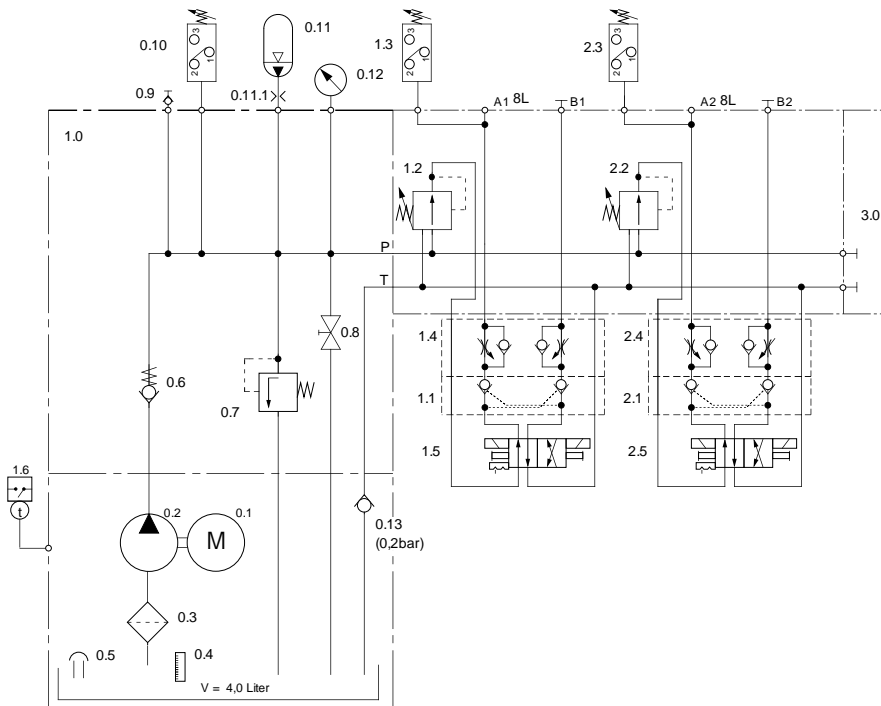
Circuit Code: BQ



Circuit Code: BR



Circuit Code: BS

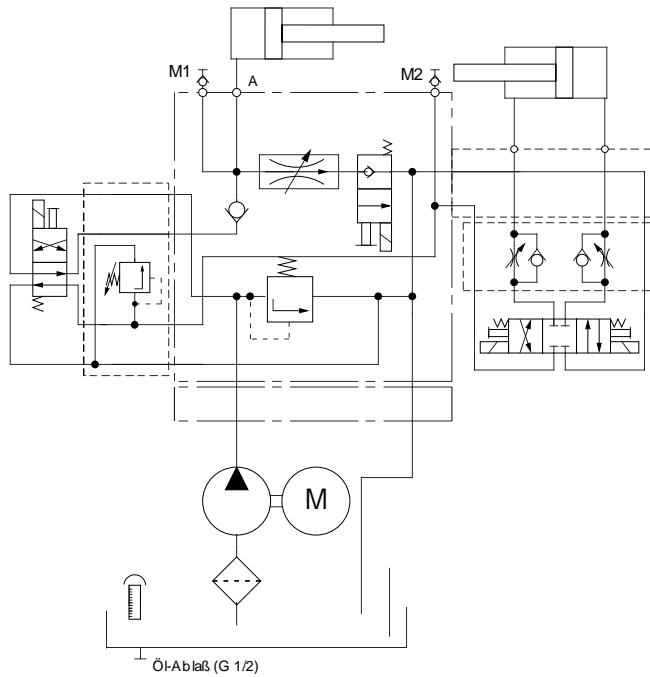


Document title: Datasheet ZPU 30

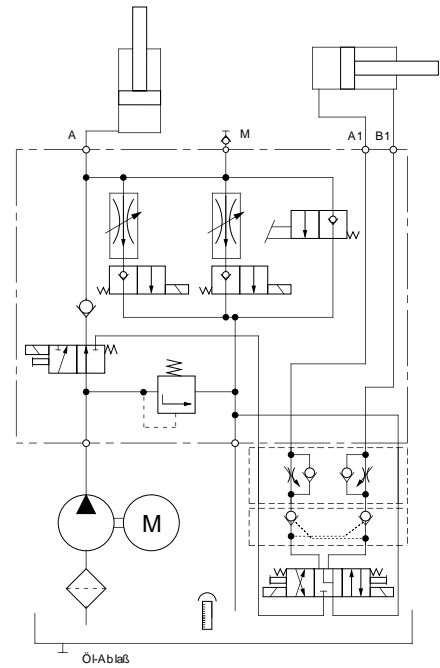
Created by R. Otto

Date: 8.5.2003

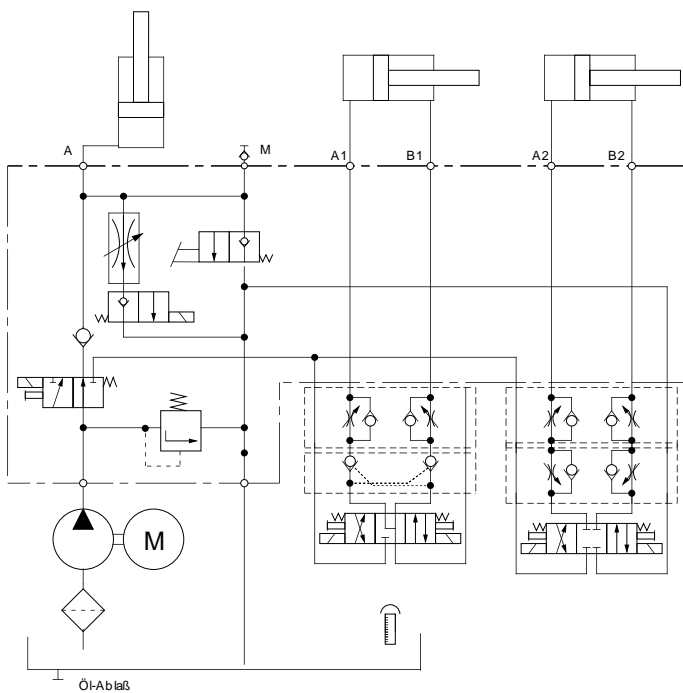
Circuit Code: BT



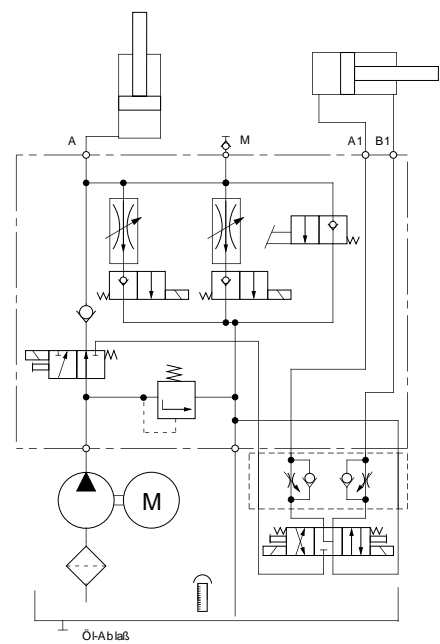
Circuit Code: BX



Circuit Code: BU



Circuit Code: BZ

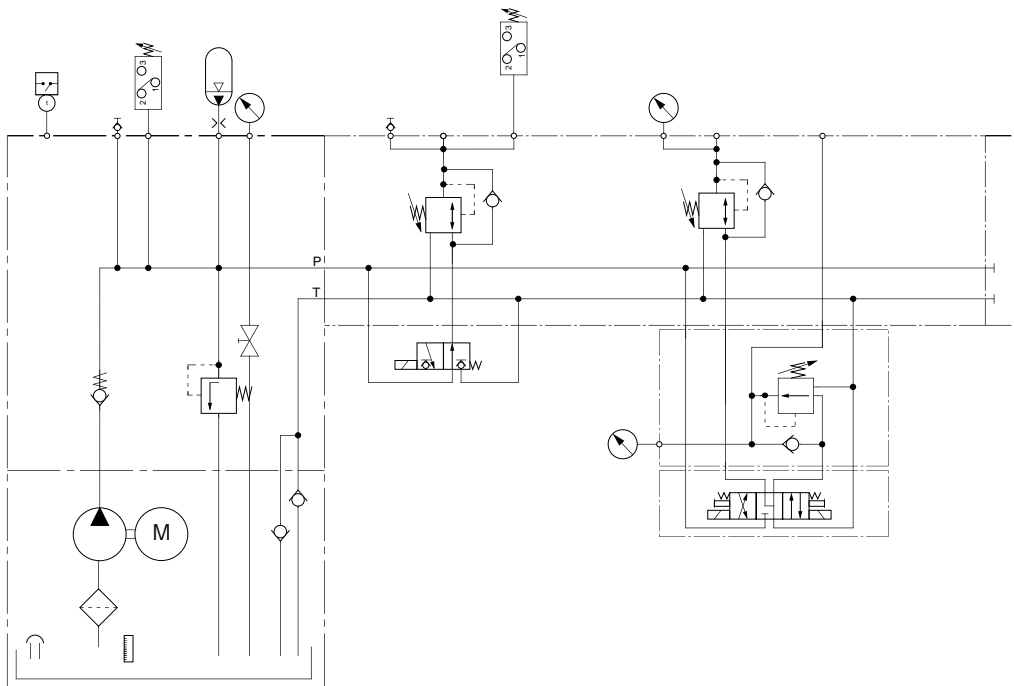


Document title: Datasheet ZPU 30

Created by R. Otto

Date: 8.5.2003

Circuit Code: BV

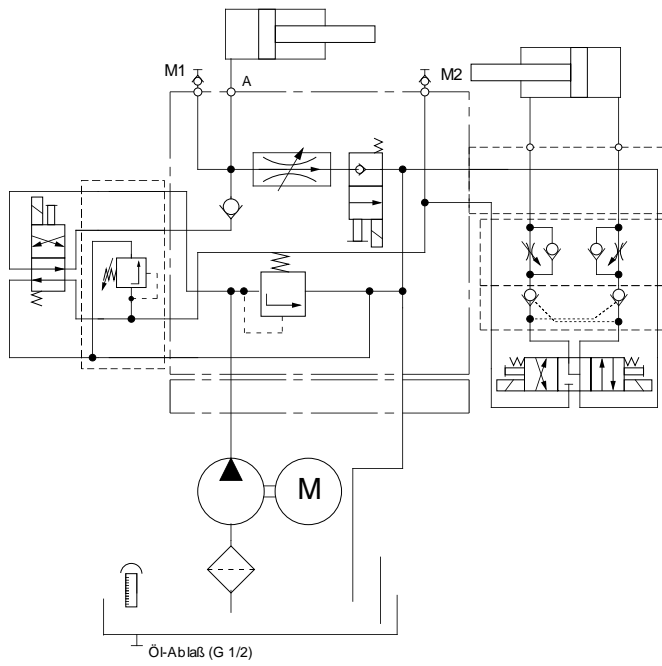


Document title: Datasheet ZPU 30

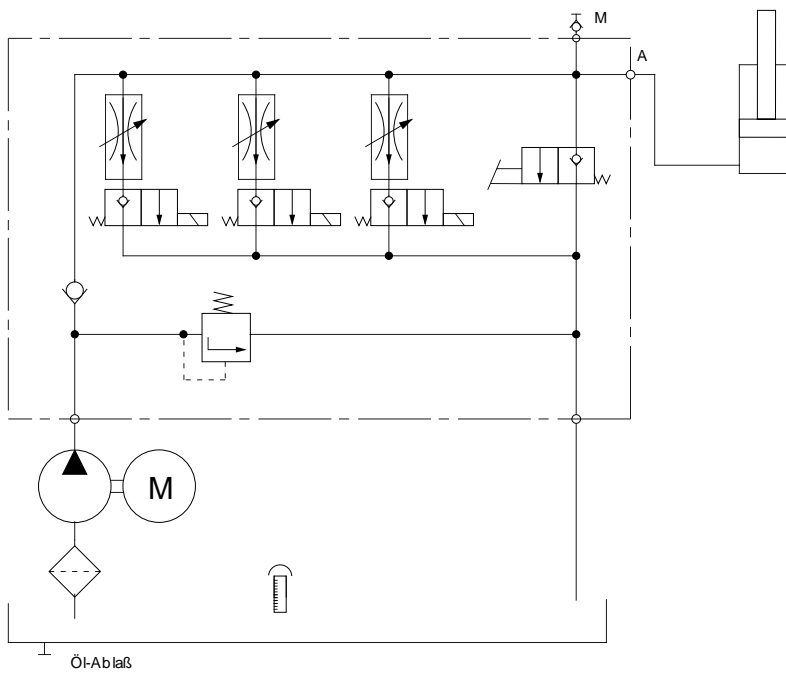
Created by R. Otto

Date: 8.5.2003

Circuit Code: CA



Circuit Code: CB

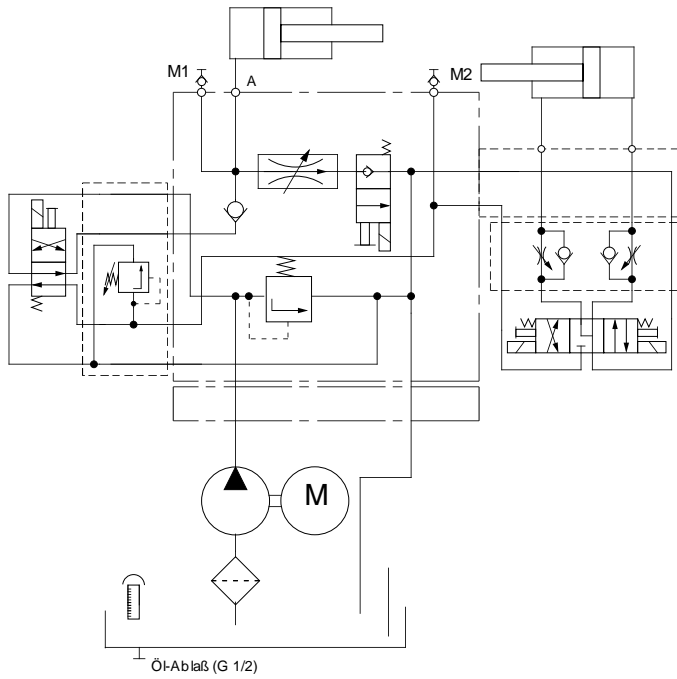


Document title: Datasheet ZPU 30

Created by R. Otto

Date: 8.5.2003

Circuit Code: CC



Circuit Code: