

Document title: Datasheet BF 10
 Created by: -
 Date: 10.10.2007

Description

Thanks to their small overall height, these units suit perfectly for narrow fitting spaces, e.g. in case of lifter tables.
 The installation height depends on the flange diameter of the electric motor and, with this type, it only amounts to 210mm.
 Apart from the lifting-lowering module which can be regarded as standard for lifting devices, further hydraulic circuits are available, see in addition the pages 3 - 17 of this data sheet.



Thanks to its design, this unit suits for intermittent operation, i.e. continuous operation is only possible with reduced power.
 Unless nothing else is indicated, the power rating for the operating mode S3-10% is valid.

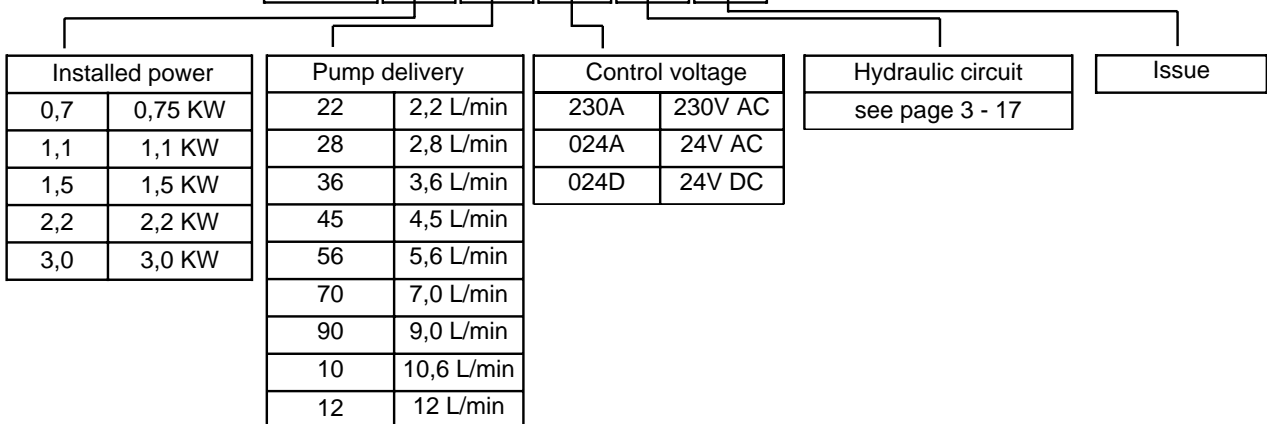
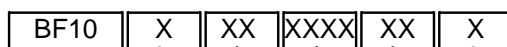
Technical Data

Operating voltage: 400 V, 50 Hz, 3 ~
 Special voltage available on request
 Nominal volume of the reservoir:
 10 Ltr. Further data according to the type code

Maximum operating pressure as a function of installed power and pump capacity

Power \ Pump-capacity	0,75 KW	1,1 KW	1,5 KW	2,2 KW	3,0 KW	Number of poles e-motor	Displacement Pump
2,2 L/min	201 bar	250 bar				2-polig	0,8 cm3/U
2,8 L/min		232 bar	250 bar			4-polig	2,0 cm3/U
3,6 L/min	127 bar	186 bar	250 bar			4-polig	2,5 cm3/U
4,5 L/min			201 bar	250 bar		2-polig	1,6 cm3/U
5,6 L/min				236 bar	250 bar	2-polig	2,0 cm3/U
6,1 L/min				210 bar		4-polig	4,3 cm3/U
7,0 L/min				189 bar	250 bar	2-polig	2,5 cm3/U
9,0 L/min					201 bar	2-polig	3,2 cm3/U
10,6 L/min					169 bar	2-polig	3,8 cm3/U
12,0 L/min					150 bar	2-polig	4,3 cm3/U

Type code:

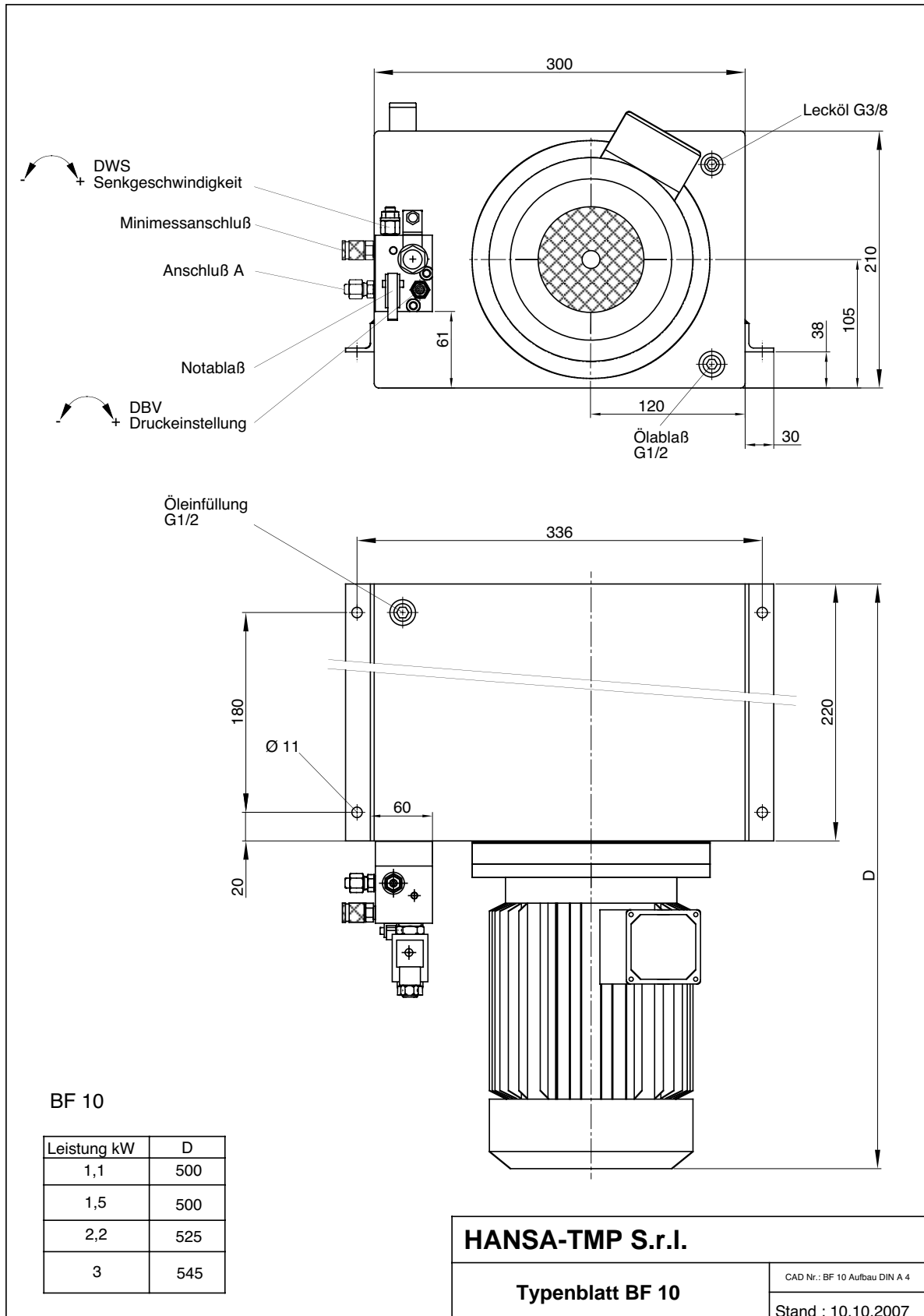


Type of example: BF10 1,1 28 230A AJ 1

Document title: Datasheet BF 10

Created by -

Date: 10.10.2007

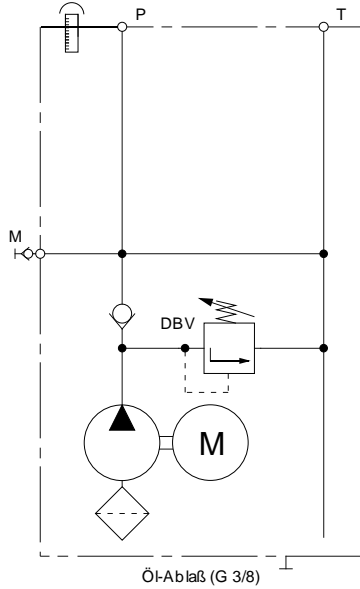


Document title: Datasheet BF 10

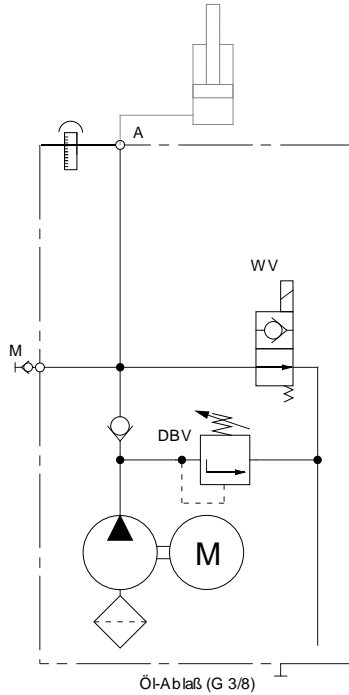
Created by -

Date: 10.10.2007

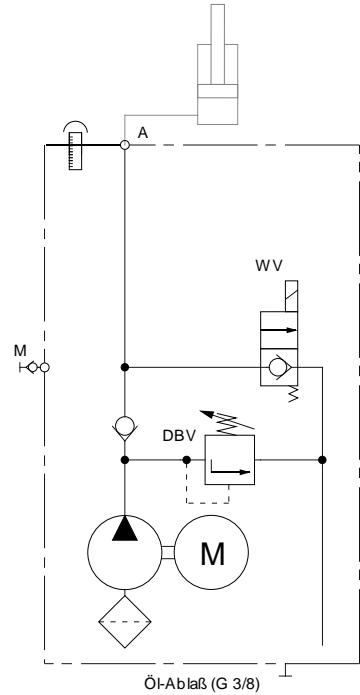
Circuit Code: AA



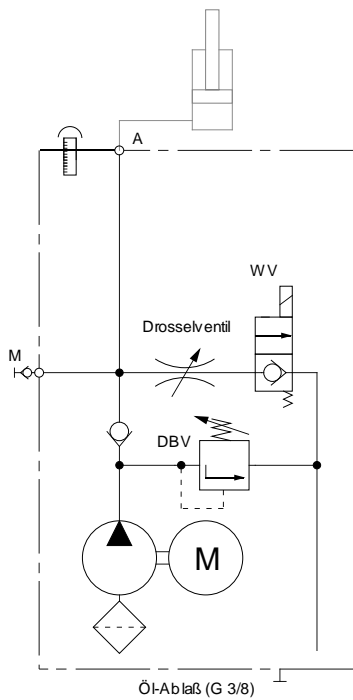
Circuit Code: AB



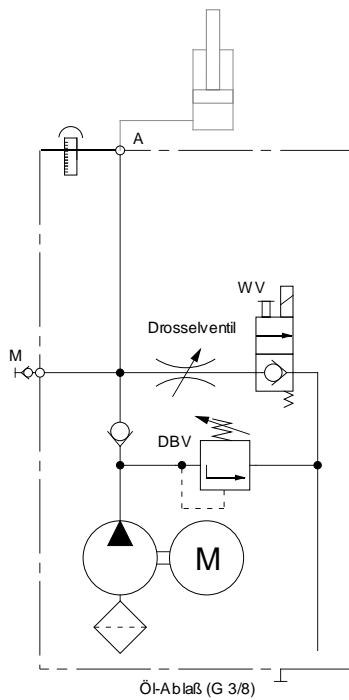
Circuit Code: AC



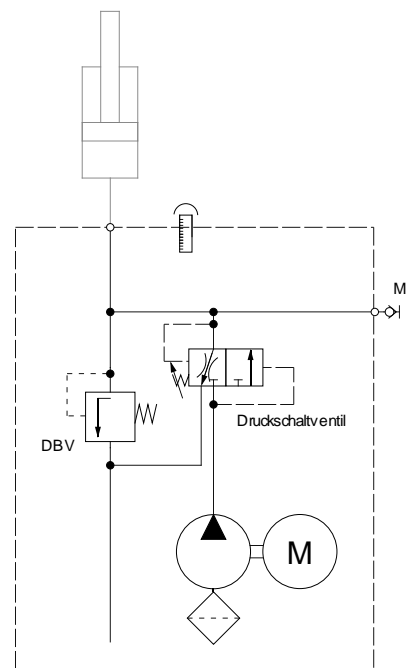
Circuit Code: AD



Circuit Code: AE



Circuit Code: AF

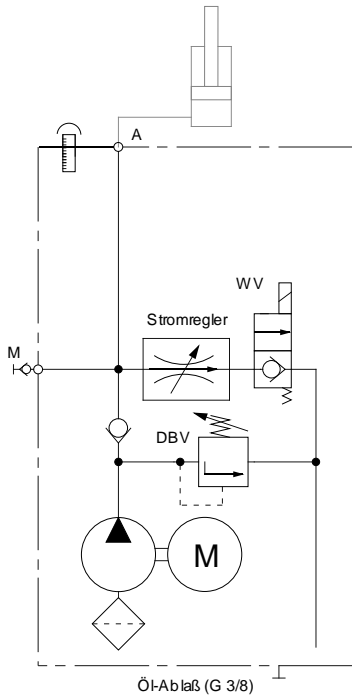


Document title: Datasheet BF 10

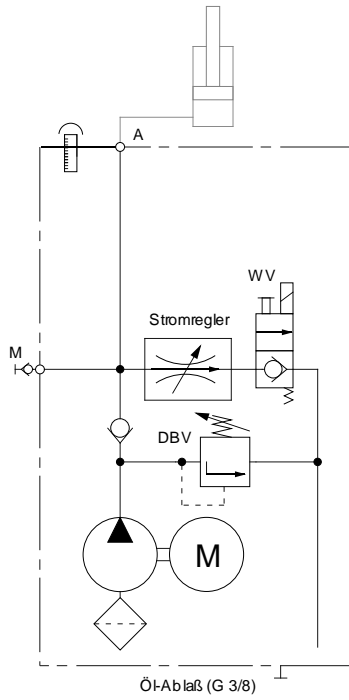
Created by -

Date: 10.10.2007

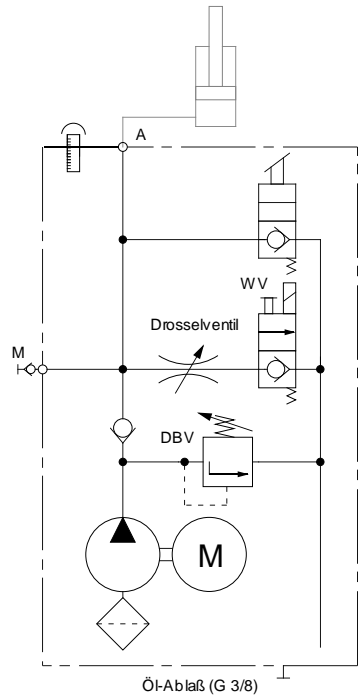
Circuit Code: AG



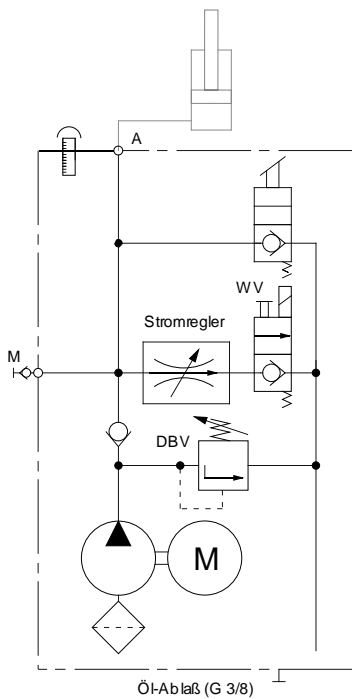
Circuit Code: AH



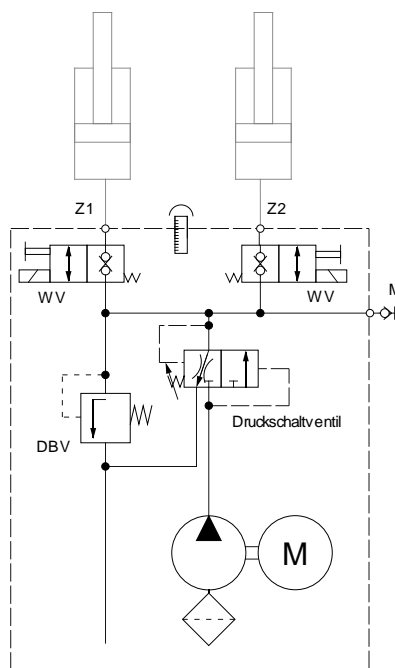
Circuit Code: AI



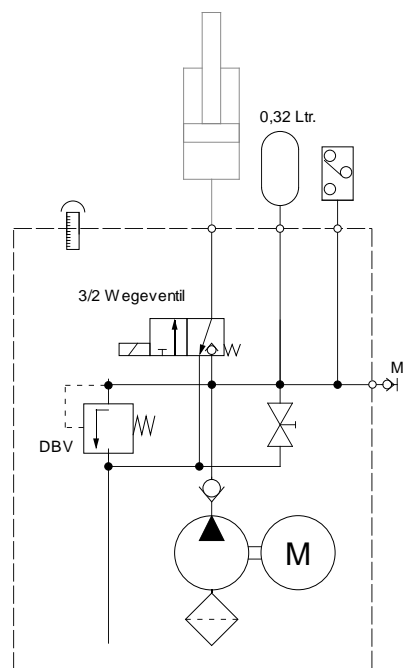
Circuit Code: AJ



Circuit Code: AK



Circuit Code: AL

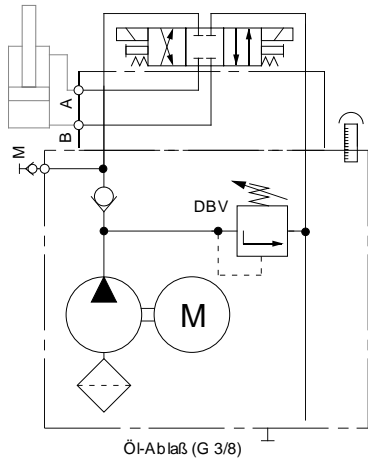


Document title: Datasheet BF 10

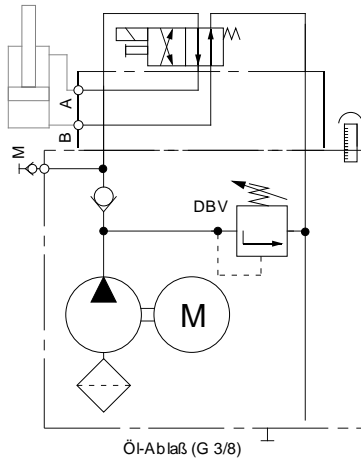
Created by -

Date: 10.10.2007

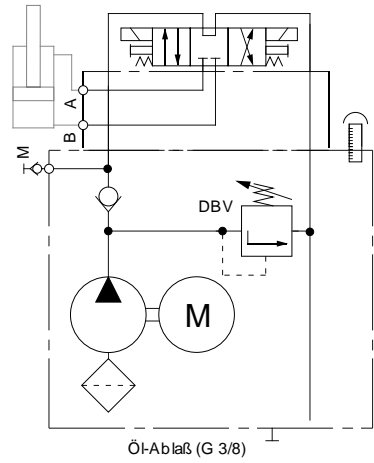
Circuit Code: AM



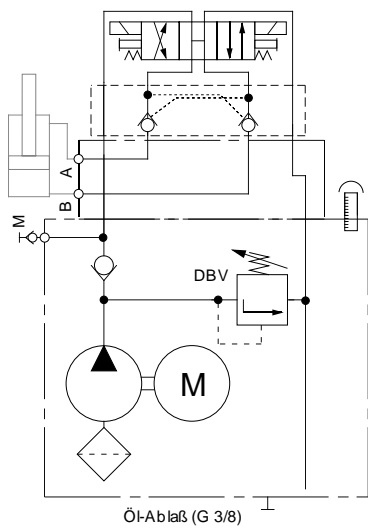
Circuit Code: AN



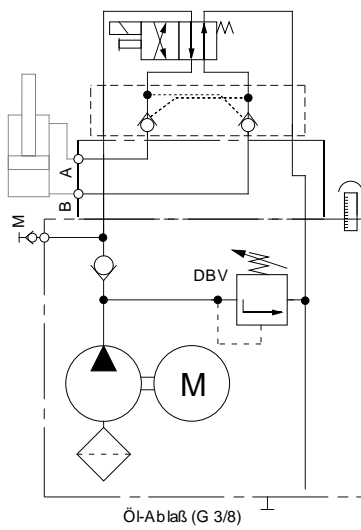
Circuit Code: AO



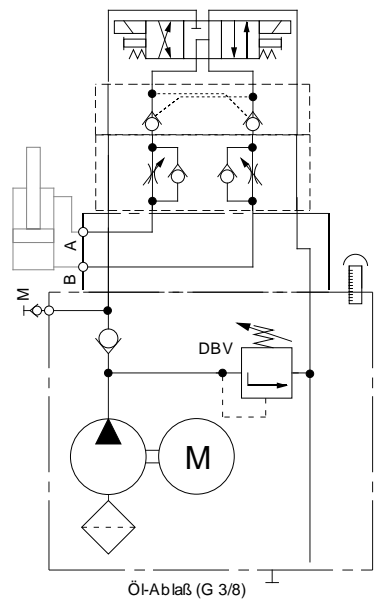
Circuit Code: AP



Circuit Code: AQ



Circuit Code: AR

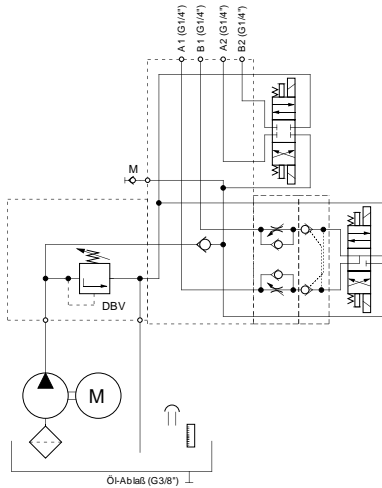


Document title: Datasheet BF 10

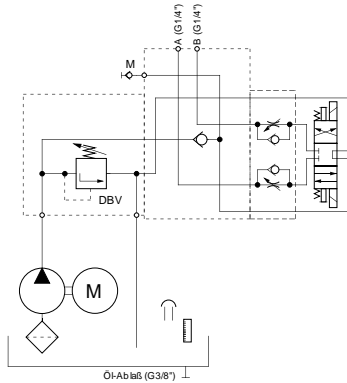
Created by -

Date: 10.10.2007

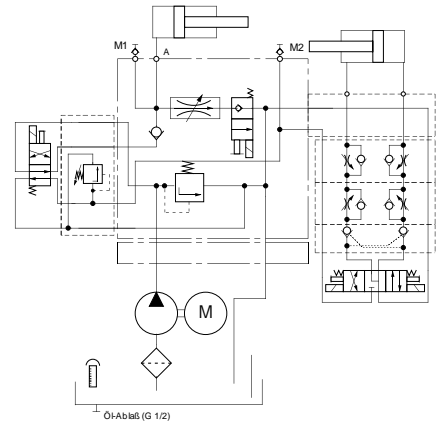
Circuit Code: AS



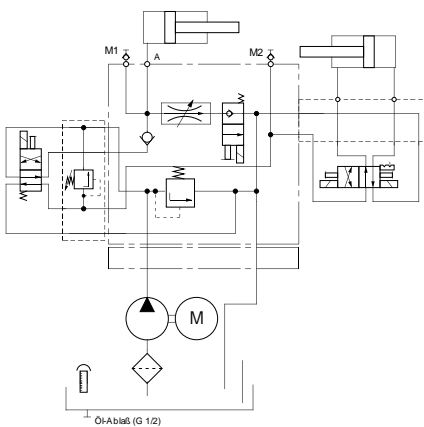
Circuit Code: AT



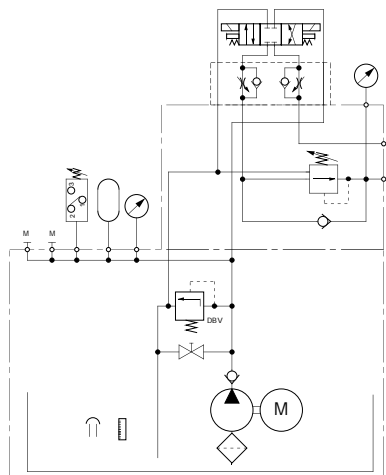
Circuit Code: AU



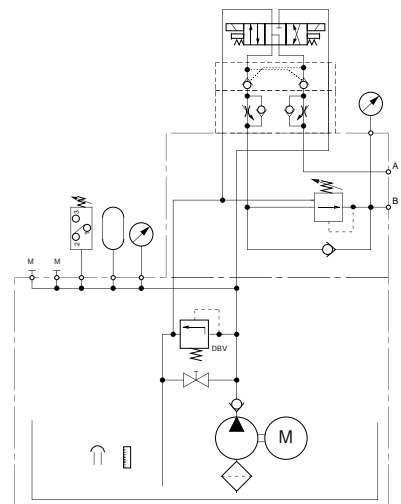
Circuit Code: AV



Circuit Code: AW



Circuit Code: AX

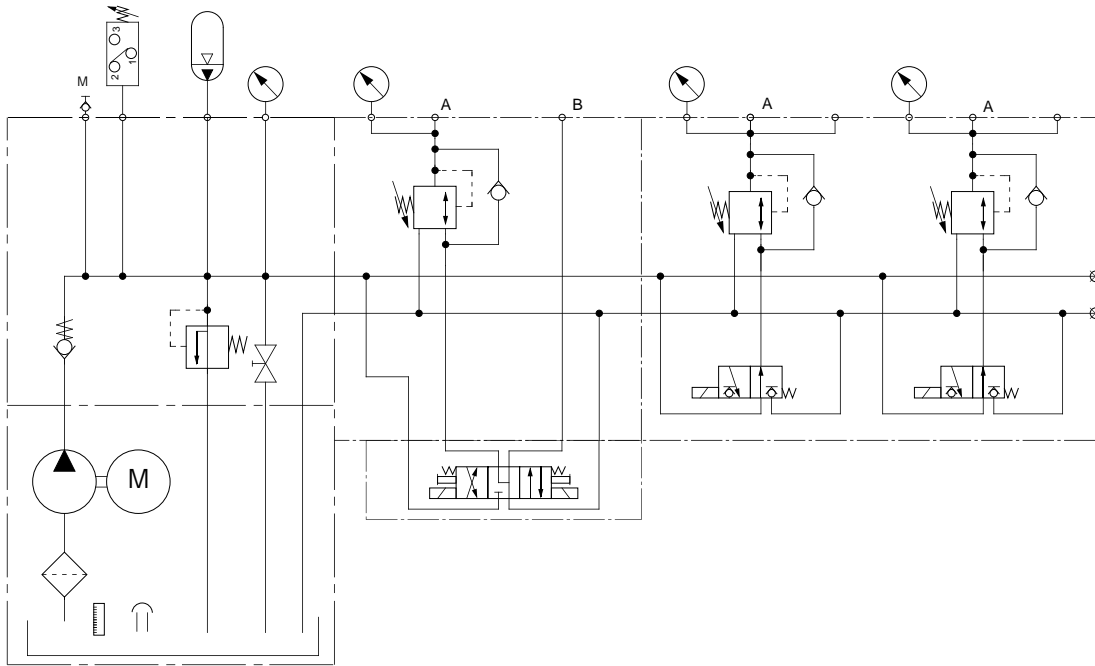


Document title: Datasheet BF 10

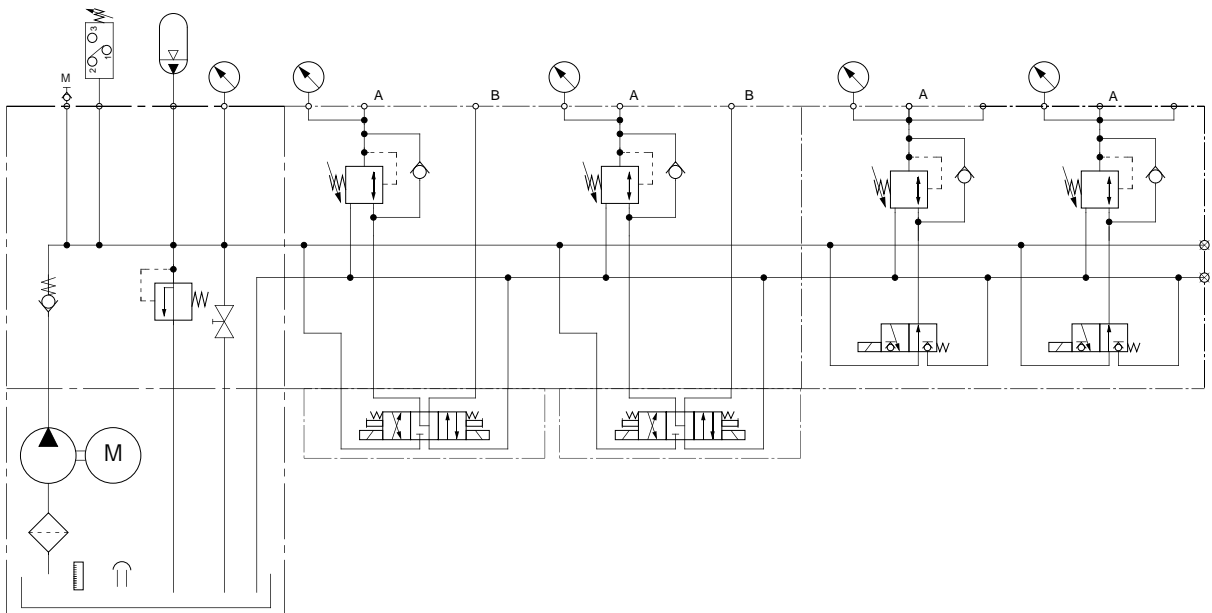
Created by -

Date: 10.10.2007

Circuit Code: AY



Circuit Code: AZ

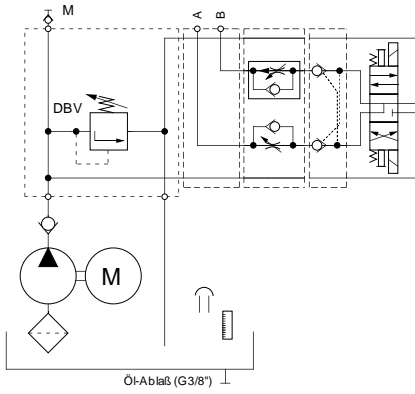


Document title: Datasheet BF 10

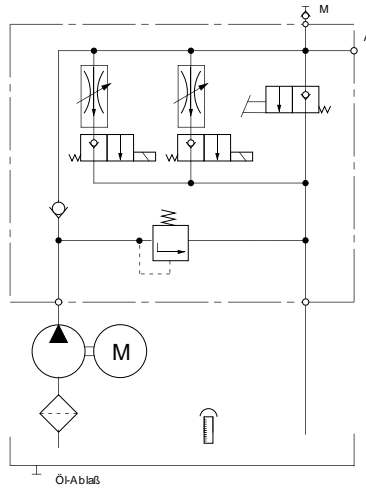
Created by -

Date: 10.10.2007

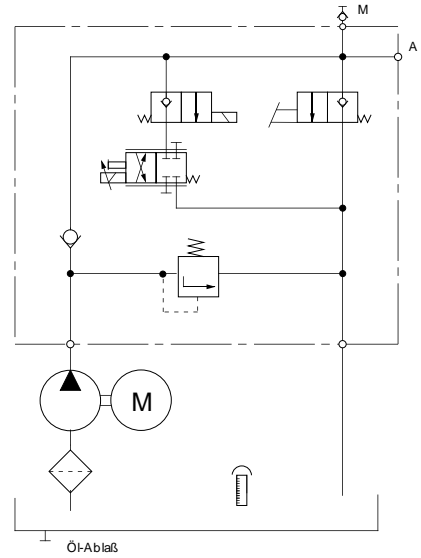
Circuit Code: BA



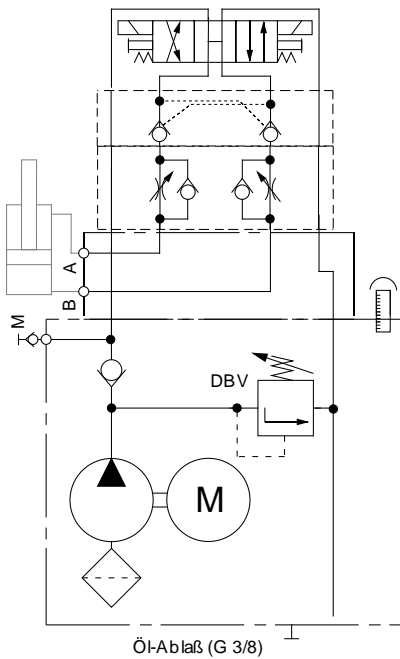
Circuit Code:BB



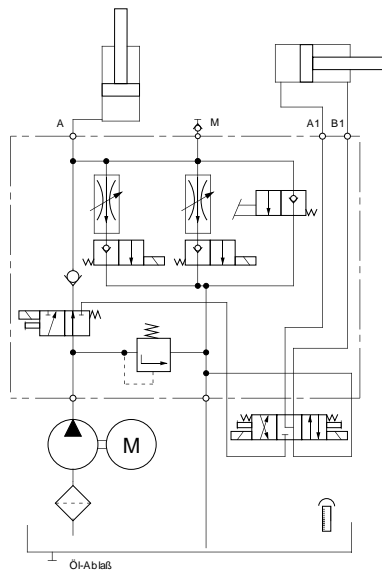
Circuit Code: BC



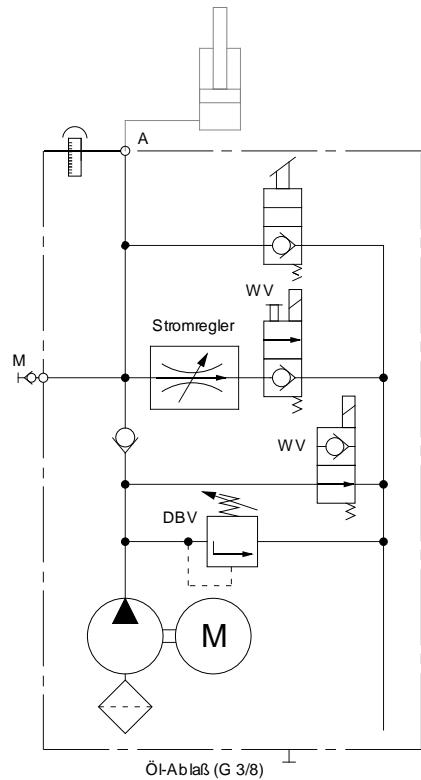
Circuit Code: BD



Circuit Code: BE



Circuit Code: BF

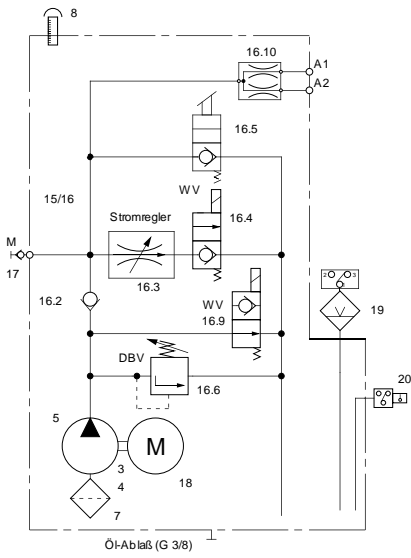


Document title: Datasheet BF 10

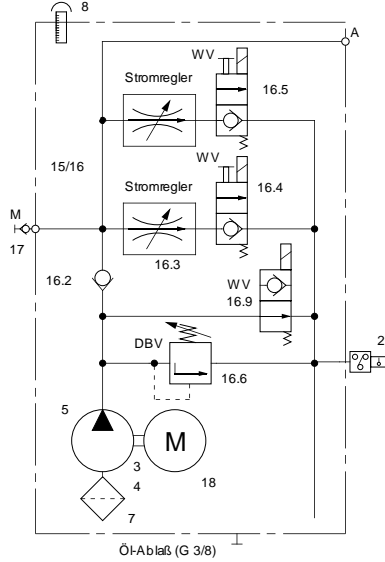
Created by -

Date: 10.10.2007

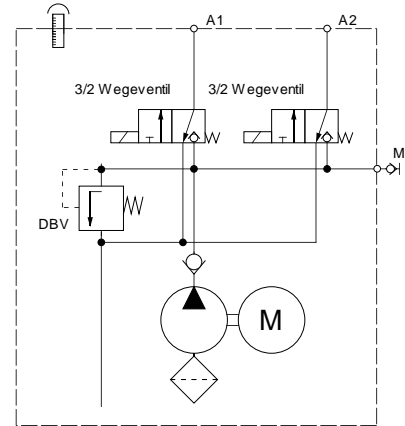
Circuit Code: BG



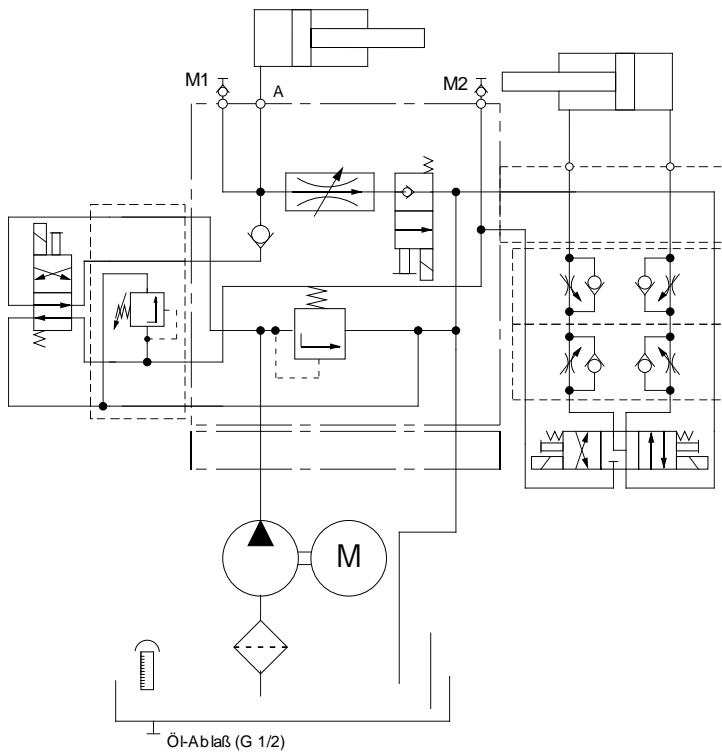
Circuit Code: BH



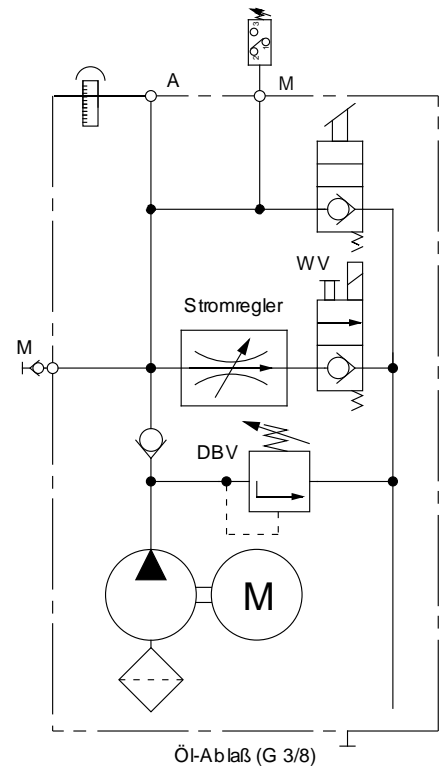
Circuit Code: BI



Circuit Code: BJ



Circuit Code: BL

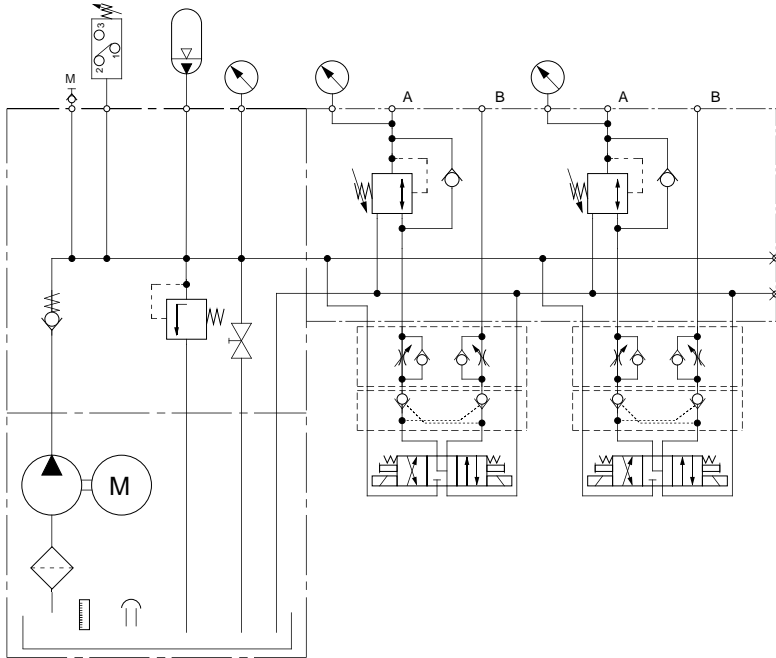


Document title: Datasheet BF 10

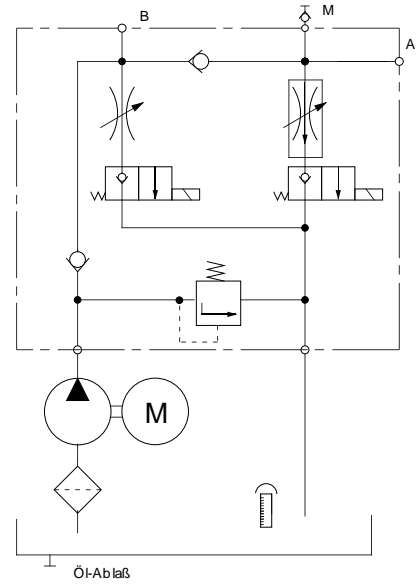
Created by -

Date: 10.10.2007

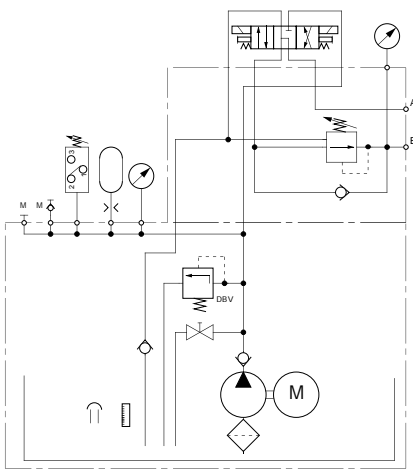
Circuit Code: BK



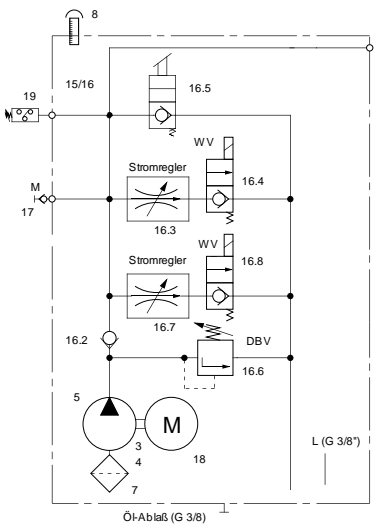
Circuit Code: BM



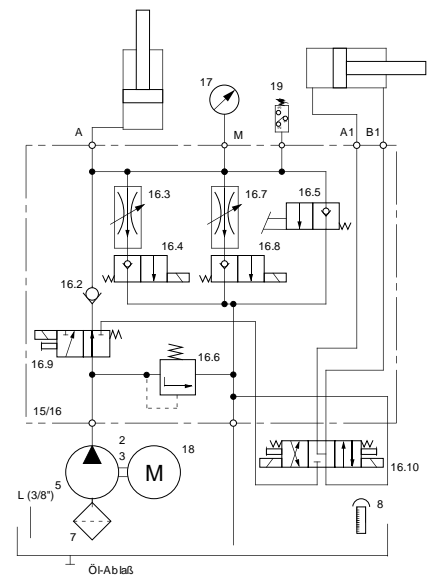
Circuit Code: BN



Circuit Code: BO



Circuit Code: BP

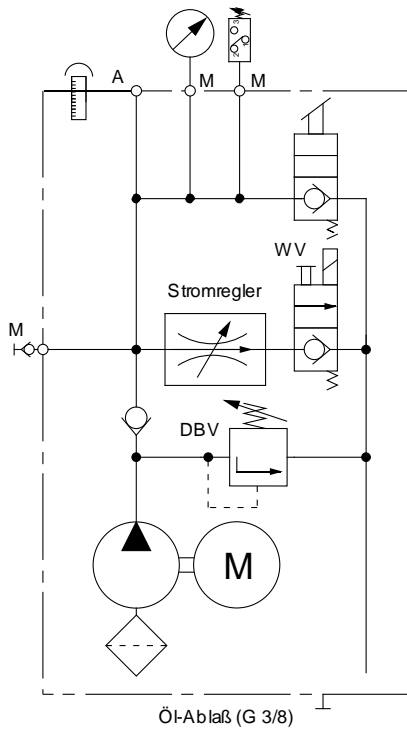


Document title: Datasheet BF 10

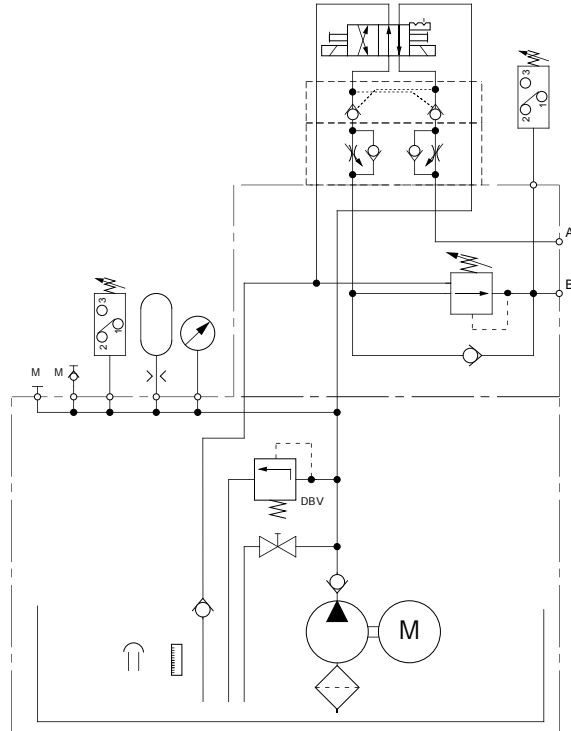
Created by -

Date: 10.10.2007

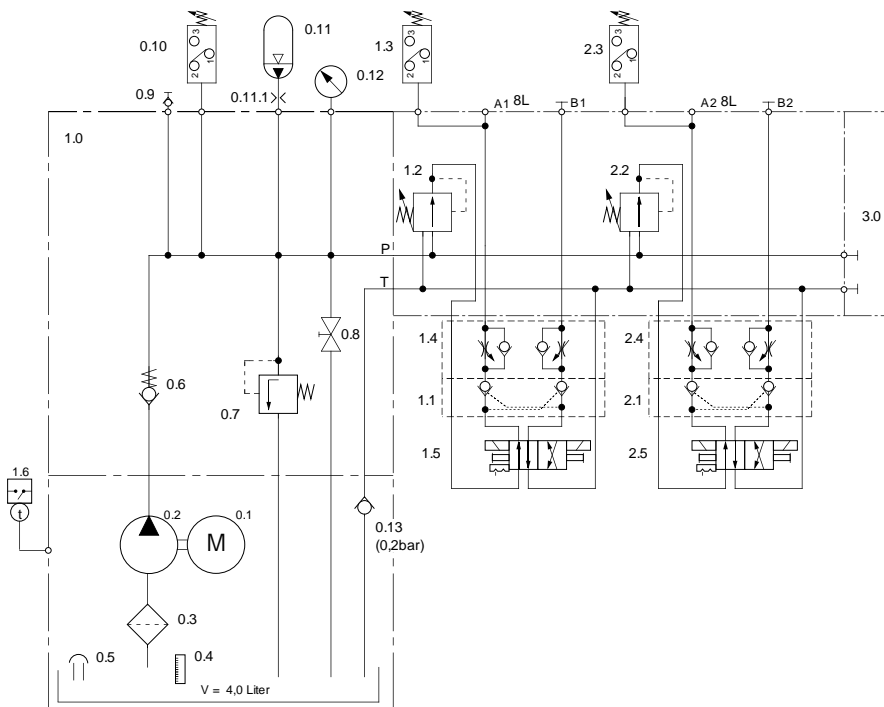
Circuit Code: BQ



Circuit Code: BR



Circuit Code: BS

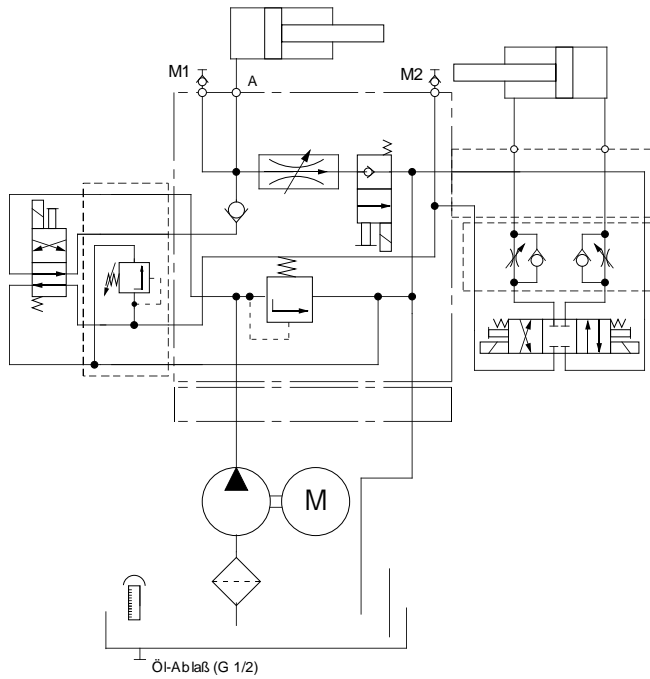


Document title: Datasheet BF 10

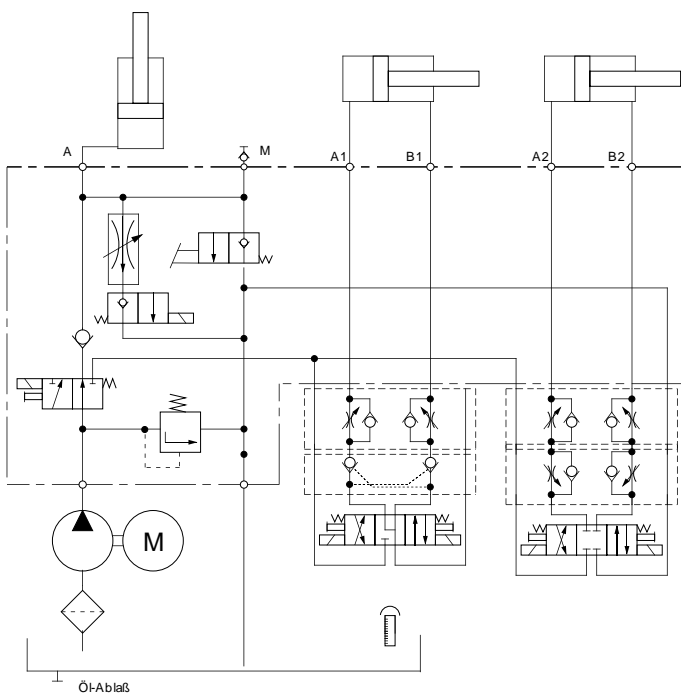
Created by -

Date: 10.10.2007

Circuit Code: BT



Circuit Code: BU

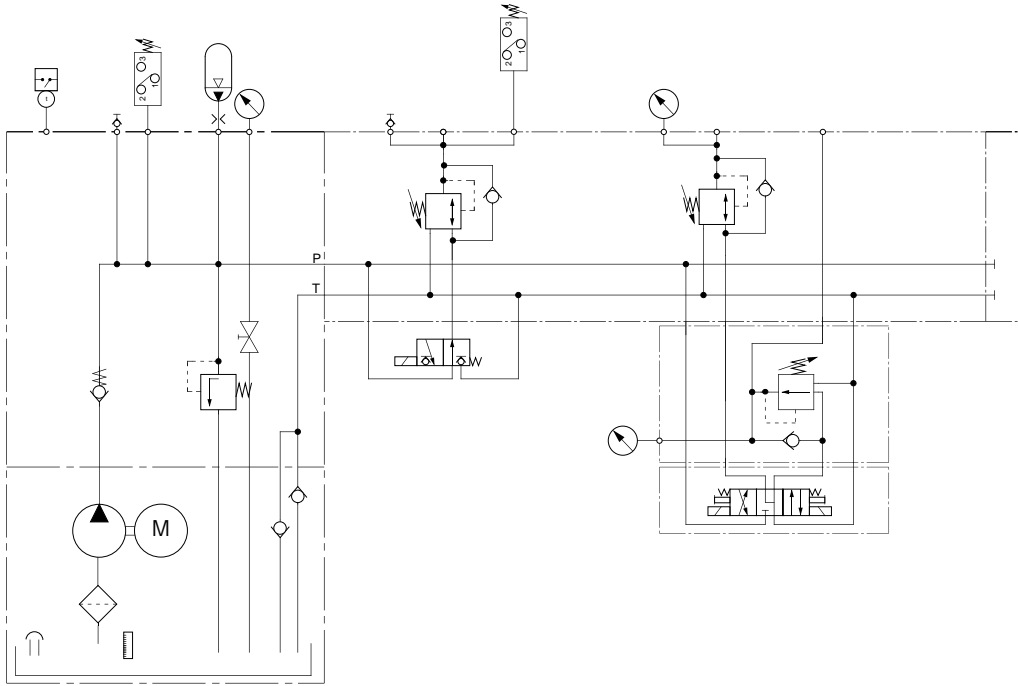


Document title: Datasheet BF 10

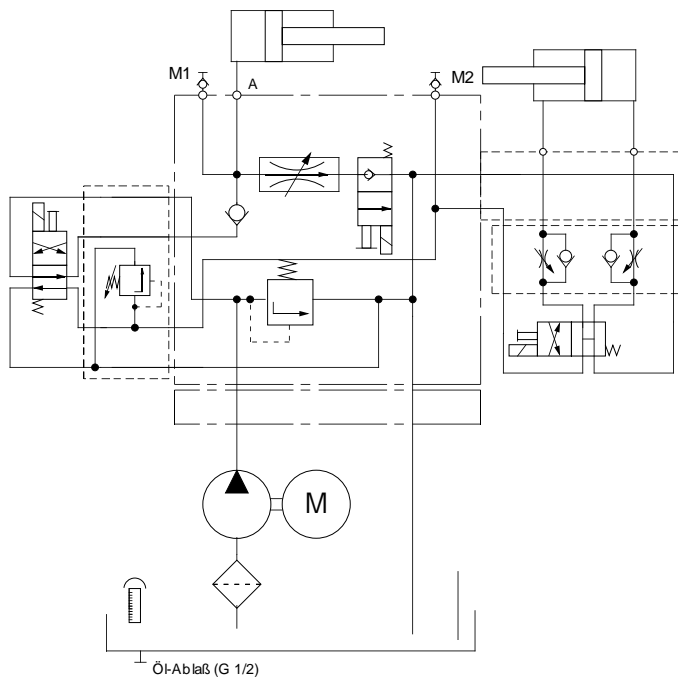
Created by -

Date: 10.10.2007

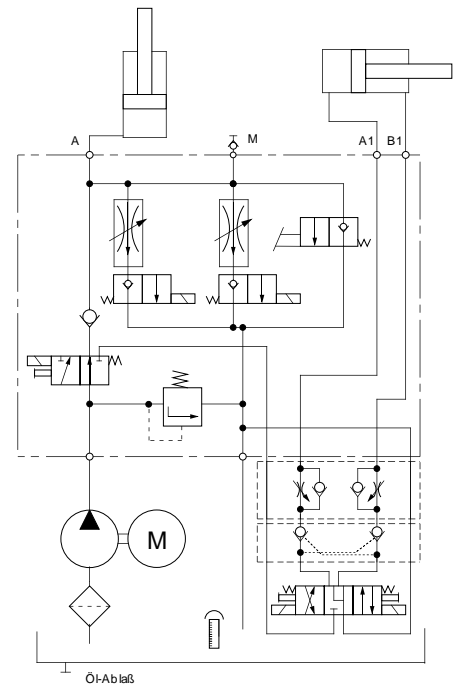
Circuit Code: BV



Circuit Code: BW



Circuit Code: BX

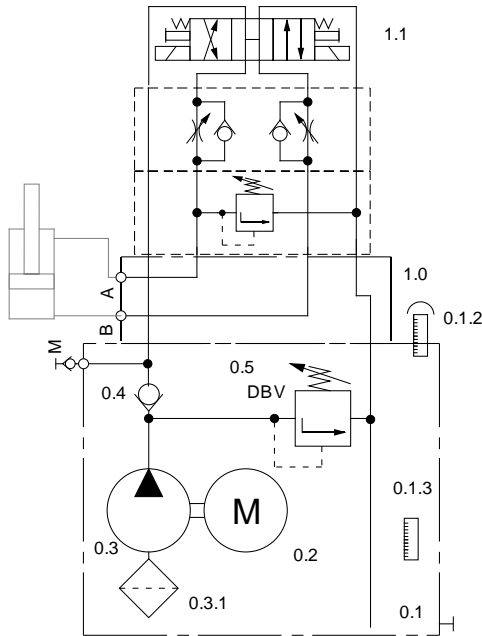


Document title: Datasheet BF 10

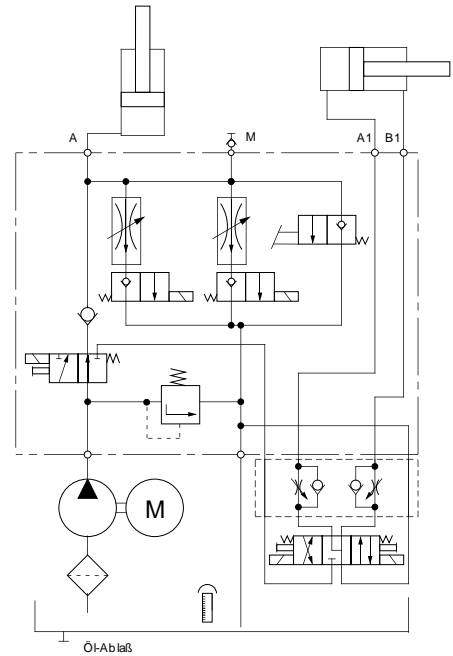
Created by -

Date: 10.10.2007

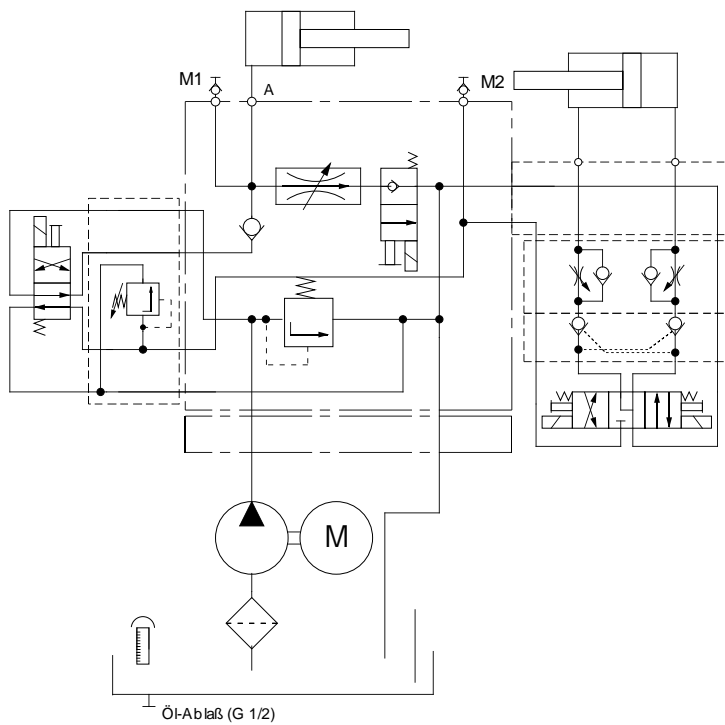
Circuit Code: BY



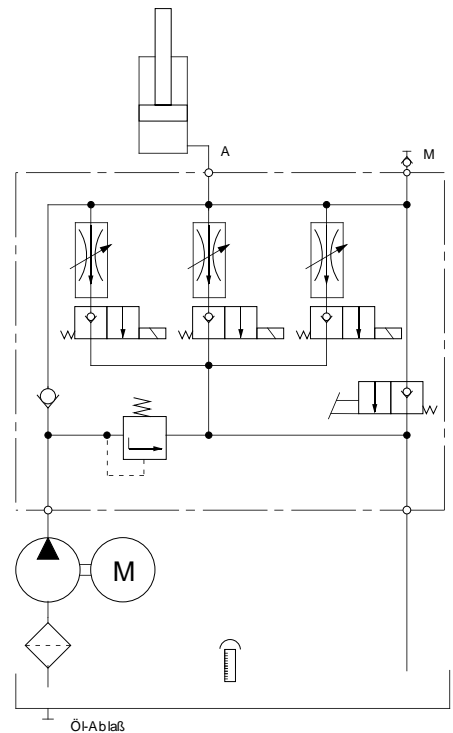
Circuit Code: BZ



Circuit Code: CA



Circuit Code: CB

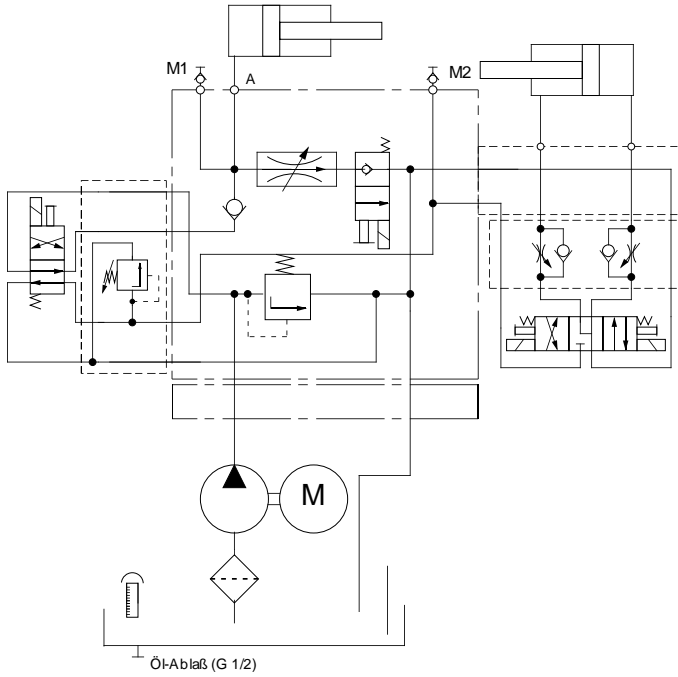


Document title: Datasheet BF 10

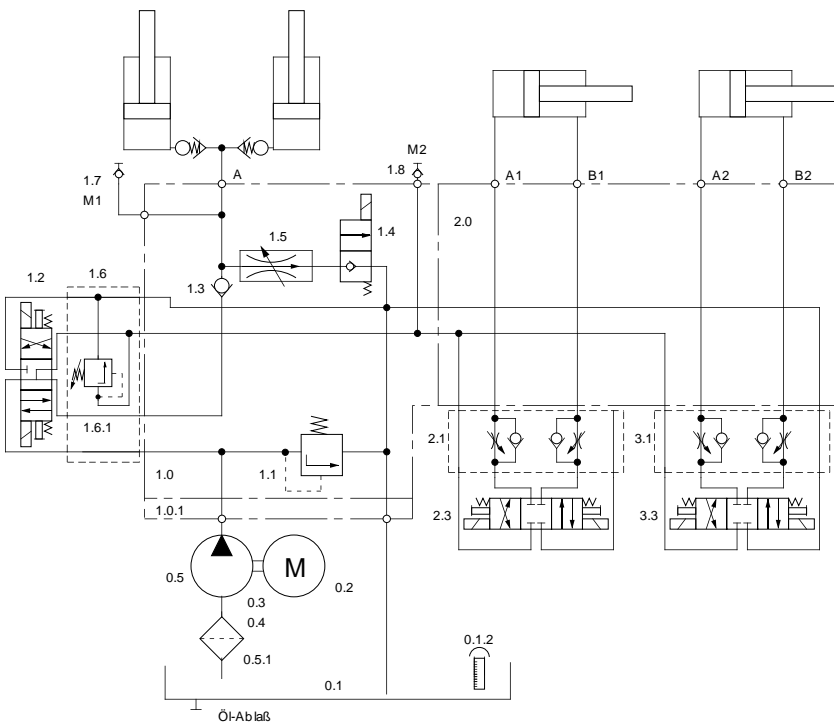
Created by -

Date: 10.10.2007

Circuit Code: CC



Circuit Code: CD

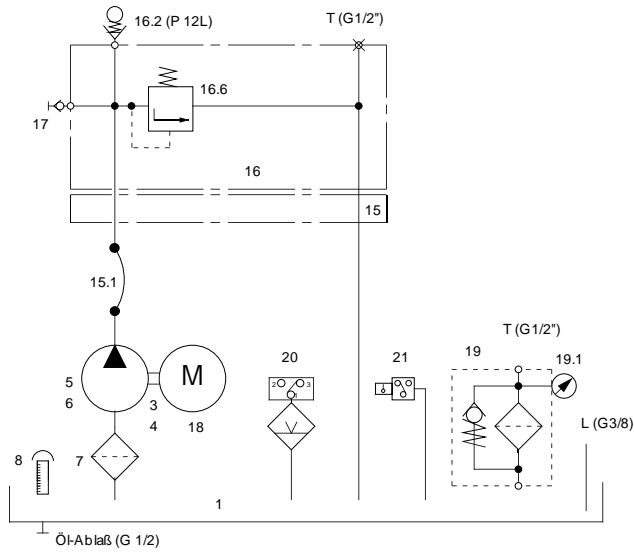


Document title: Datasheet BF 10

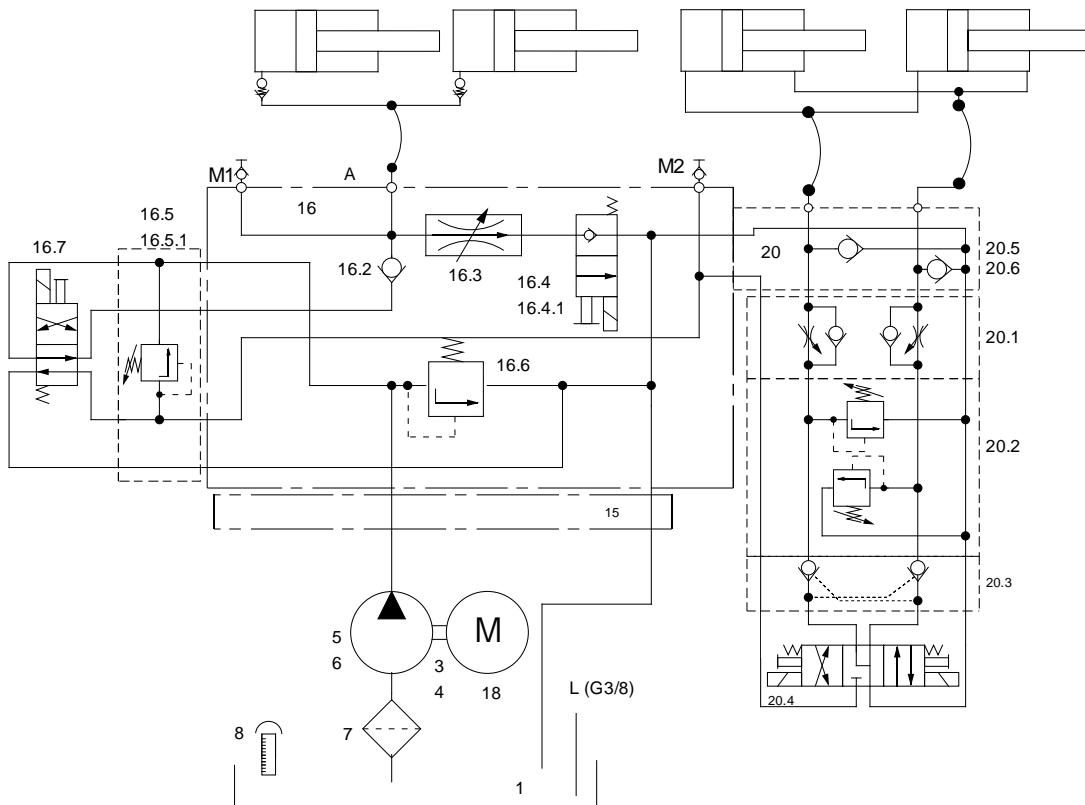
Created by -

Date: 10.10.2007

Circuit Code: CE



Circuit Code: CF



Document title: Datasheet BF 10

Created by -

Date: 10.10.2007

Circuit Code: CG

Circuit Code: CH

