



# **HYDROMA**

## HYDRAULIC SYSTEMS



## POWER PACKS PRODUCT CATALOGUE

IN PARTNERSHIP WITH HANSA-TMP SRL





tradition | engineering | know-how

design | production | service

### People

Our employees are the source of our prosperity and growth. We pay extraordinary attention to their selection and professional progress. Each of our employees is responsible for our customers' satisfaction and contributes to the company's growth.

The creativity of our engineers in all they do is the most important source of our progress.

### Communication

Our sales and marketing department ensures communication with customers aiming to finding optimal solutions, and flexible delivery of components. This department forms partner relations with our customers.

### Quality

Our products belong to the most technologically advanced ones in the market with respect to local markets. Since 2003, our company has been certified with the Quality Management ISO 9001:2000.

The internal quality management system controls production procedures; we use up-to-date measuring equipment for verifying the parameters of our products. Design, production, and testing are carried out with full respect for the technical safety of our products.

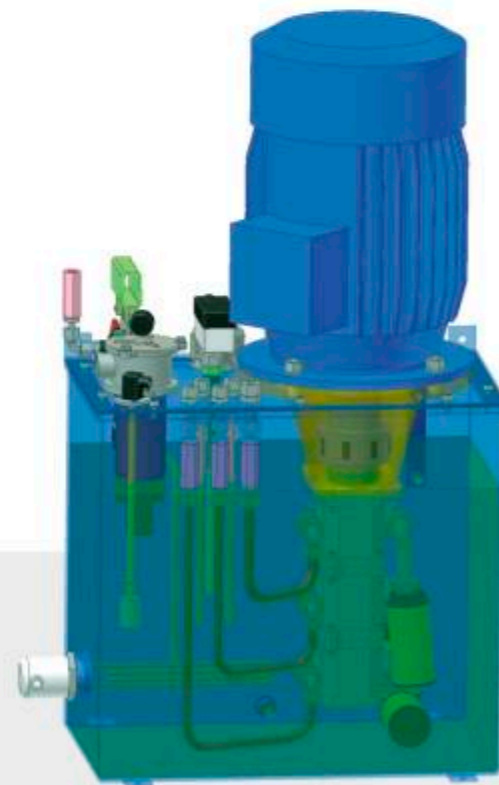


ISO 9001:2000 Certificates

### Hydroma Company Presentation

HYDROMA, spol s.r.o. has been established in 1994 in partnership with HANSA-TMP SRL of Italy, and is engaged in the engineering, the delivery of hydraulic systems and components and comprehensive services in the field of hydraulics for industrial applications. Customers make use of our extensive selection of hydraulic components for turnkey deliveries and purchases "under one roof". Economic growth allowed more extensive investment into the company infrastructure and technologies. Our information system allows us to flexibly respond to the needs of our customers. Our motto represents serviceability, responsibility, and delivery flexibility augmented with the hydraulic components warehouse capacity, and the ability to find solutions in consonance with our customers' requirements.

Headquarter of HYDROMA SPOL S.R.O. is in Uhersky Brod, Czech Republic; HANSA-TMP SRL Headquarters are in Modena, Italy. Other members of the group are HYDROMA SK SPOL S.R.O. of Povazska Bystrica, Slovakia; HIDROMA SISTEMS SP.Z.O.O. of Chorzow (Katowice), Poland; HYDROMA-PHU D.O.O., Oroslavje, Croatia.



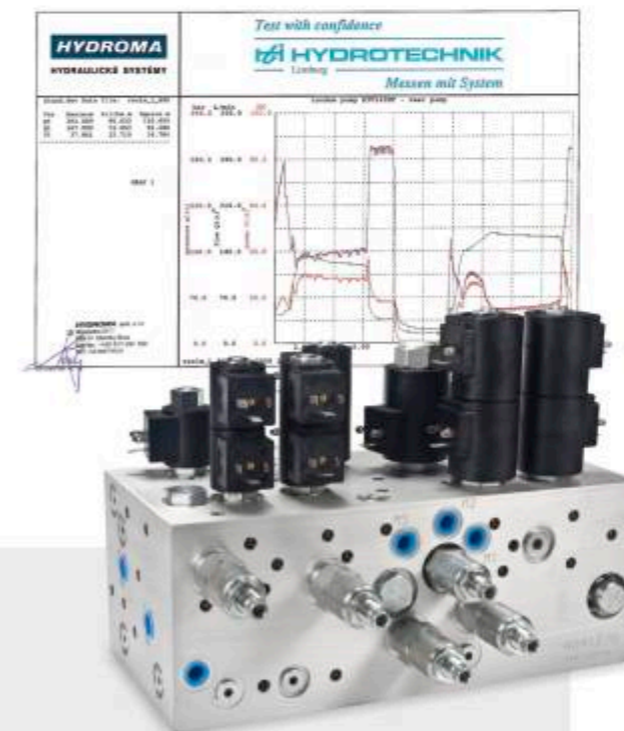
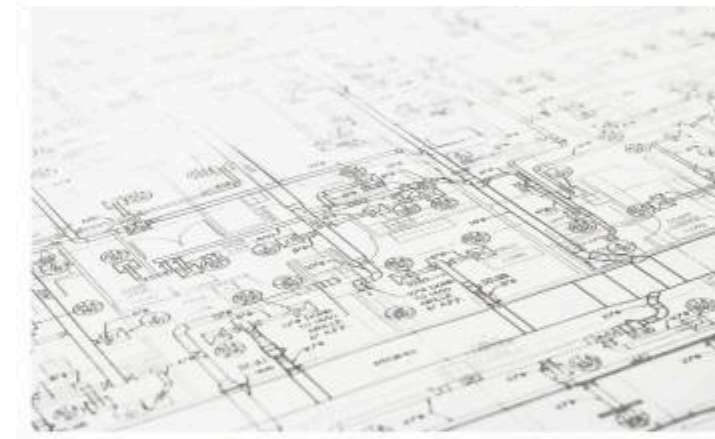
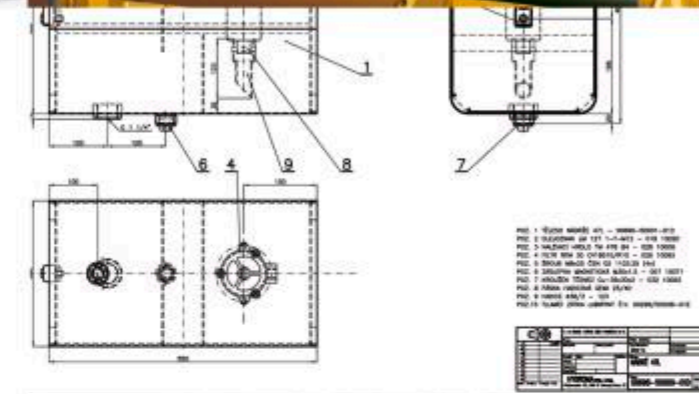
Hydraulic Power Pack 3D Image

### Engineering – Systems Design

In our design centre, we continually develop new and more advanced hydraulic aggregates and systems as per our customers' specification. Specific projects usually deal with designing electric or electronic systems for machines, in some cases also programming customised software.

Project documentation is drawn up using the AUTOCAD system and CAD-3D systems.

New products are designed in compliance with European standards, technical standards, and the safety regulations in force. Optionally, as per customer request, we respect the specifics and technical requirements of local markets.



Customised Hydraulic Block

### Production

We produce various types of hydraulic power packs with electronic control and industrial installations for all industry fields. Production and service take place in a modern assembly hall under strict observance of technological procedures in terms of quality, assembly, and cleanliness of the production environment.

Single-purpose machines for assembling hydraulic fittings, bending and cutting machines assure the quality of the assembled hydraulic pipelines. Before expedition, our products are subject to thorough testing, the protocol of which is rendered to the customer.

We assemble our hydraulic power packs and pipelines, start up systems and set them at the customer site.

### Service

We provide a guarantee and post-guarantee service.



energy equipment



industrial machines and devices



1. **Butterfly Gate Hydraulic Power Pack with Humidity Absorber**

This device assumes control of small hydropower stations during electric power supply outage, with an output of 1.5 kW, 110 V D.C.

5. **Hydraulic Power Pack with Vane Pump**

Equipped with a vane pump, Installed power 11 kW.



2. **Butterfly Gate and High-Speed Stopper Control Power Pack**

Source unit for large energy systems. Installed power 2x 11 kW, 2x 4 kW.

6. **Hydraulic Power Pack with Axial Piston Pump for Concrete Processing Line**

Equipped with an open loop axial piston pump for dusty environments. Installed power 18.5 kW.



3. **Wind Generator Bearings Tester**

Lubrication and power sections. Installed power 3 kW, max. 350 bar working pressure.

7. **Roof Structures and Wooden Sections Press Hydraulic Power Pack**

Equipped with an open loop axial piston pump, designed for an increased number of work cycles. Installed power 15 kW.



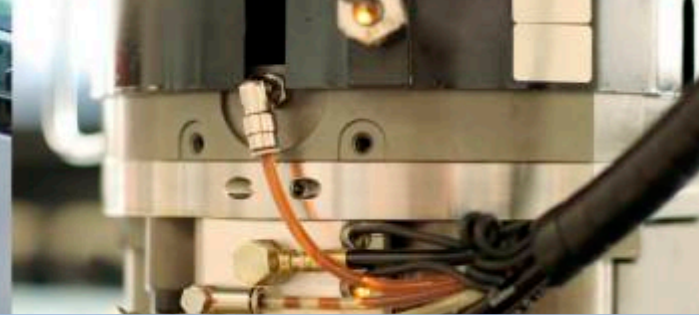
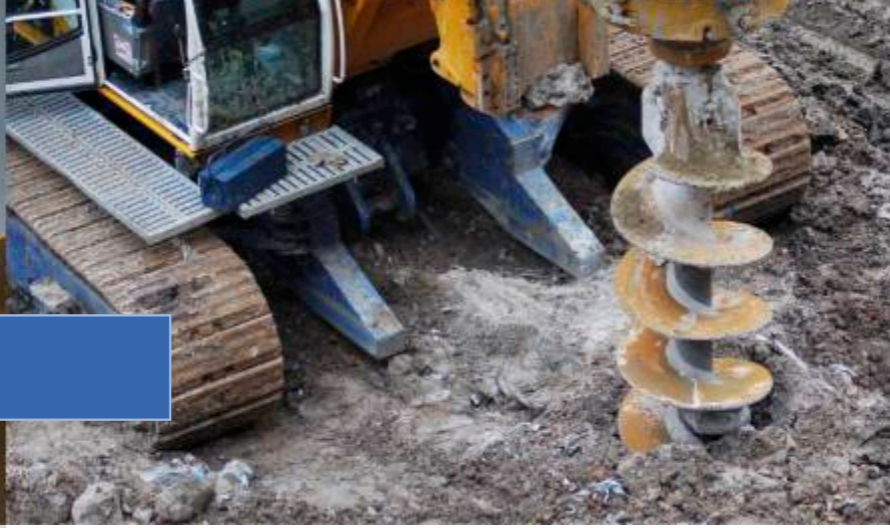
4. **High-Speed Stopper Control Hydraulic Power Pack, Including Electronics and Display**

The turnkey design and realisation including programming and start up. Installed power 11 kW.

8. **Machine Tool Clamp Jig Control Hydraulic Power Pack**

The system is equipped with proportional valves and a precise setting of device parameters. Installed power 3 kW.





**lubrication systems**

**special-purpose devices**



**9. Water Power Station Generator Bearings Lubrication Power Pack**

Equipped with screw pumps, duplex filters, and a duplex backup system. Installed power 2x 4 kW.

**13. Hydraulic Power Pack for presses**

Source of oil pressure for press device, with an ecological tub. Installed power 7.5 kW.



**10. Lubrication Power Pack**

Equipped with water cooler and electric heating. Installed power 5.5 kW.

**14. MC Series Mini Power Pack**

Designed for effective, flexible, and economic solutions using the CETOP 3 valves. Installed power 0.37 kW – 3 kW.



**11. Construction Rubble Crusher Lubrication Hydraulic Power Pack**

Modular design for simple applications. Installed Power 3 kW.

**15. Control Hydraulic Power Pack for 2 Hydromotors**

Modular design, for general usage. Installed power 2.2 kW.



**12. Lubrication Power Pack**

Equipped with water cooler, heating, flow indicators and a humidity absorber. Installed power 4 kW.

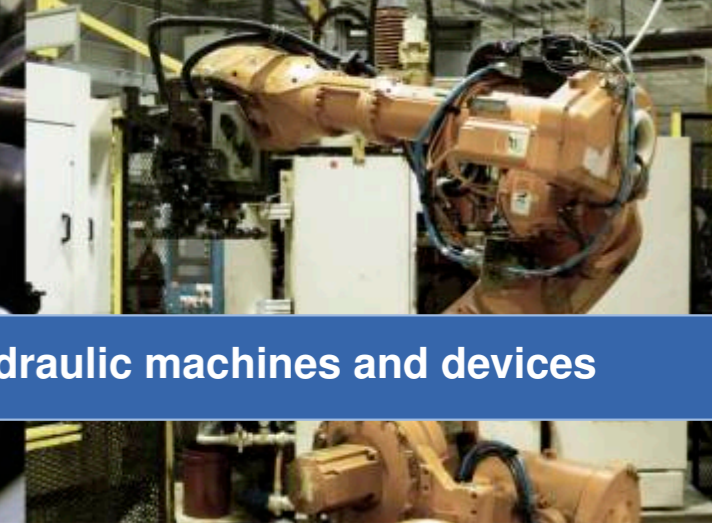
**16. Special-Purpose Food-Processing Machine Power Pack**

Custom-tailored power pack using standardised components. Installed power 2.2 kW.





## mobile equipment



## hydraulic machines and devices

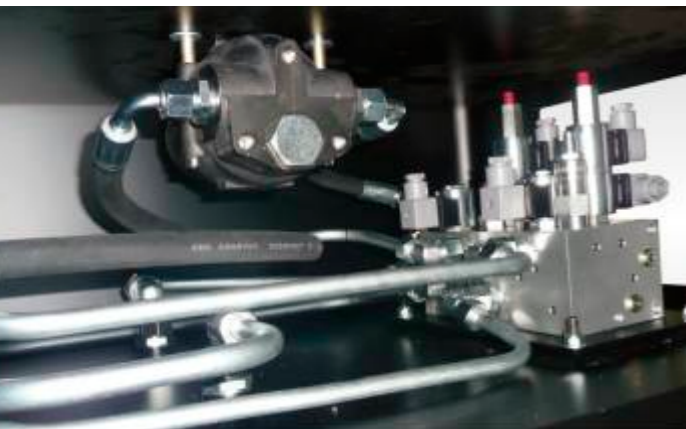


### 17. Combustion Engine Hydraulic Power Pack

Used for driving mobile machine equipment, with a pump for a closed loop circuit, includes a combustion engine with an output of 90 kW and working movement valves.

### 21. Rubber Items Processing Hydraulic Power Pack

It uses a tandem vane pump, an off-line cooling unit with an ecological tub. Installed power 11 kW.



### 18. Compact Hydraulic Unit with Tank

This system is mounted on trucks. It includes valves, filters, and pipelines.

### 22. Wood-Processing Industry Utility Hydraulic Power Pack

It uses a vane pump. Installed power 15 kW.



### 19. Drilling Rig Hydraulic System

The driving unit with an axial piston open loop pump, a radial piston motor, a drilling tool drive, and service hydraulics for other functions.

### 23. Pattern Hole-Cutting High-Pressure Hydraulic Power Pack

It uses components for a hydraulic pressure of 700 bar and has high performance parameters. Installed power 2.2 kW.



### 20. Refuse Collectors Hydraulic System, Electric Installation Included

It drives the press mechanism, waste container tilting and emptying. Actuated from the vehicle's PTO.

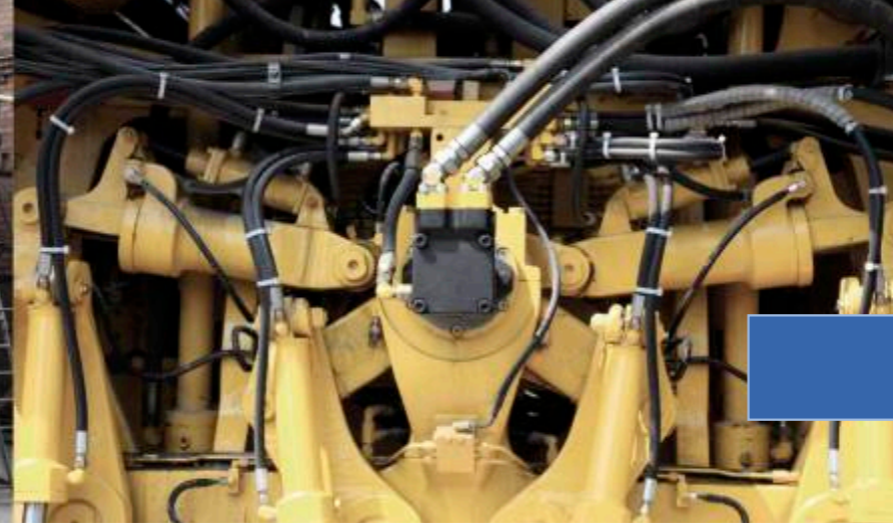
### 24. General Use Small Hydraulic Power Pack

A standardised modular design. Installed power up to 5.5 kW.





waste management, recycling



custom-tailored solutions



**25. Stationary Waste Compactor Hydraulic Power Pack**

The most powerful design for compactors working at waste handling and recycling points. Installed power 27 kW.

**29. Design, development, and manufacturing turnkey machinery**

Performed in consonance with customer requirements.



**26. Stationary Waste Compactor Hydraulic Power Pack**

Unique compact design unit for high-performance compactors used in the heaviest industrial environments. Installed power 15 kW.

**30. Electric Installation Delivering and Wiring**

Designing, manufacturing, and hard-wiring of the machine incl. revision testing.



**27. Mobile Waste Compactor Hydraulic Power Pack**

Special-purpose compact design power pack with double-speed operation, oil flow regeneration. Installed power 4 kW, 5.5 kW and 7.5 kW.

**31. Hydraulic Pipelines Installation, System Elements Assembly and System Start-up**

Performed in consonance with customer requirements.



**28. Stationary Waste Compactor Hydraulic Power Pack**

Used for medium-size compactors with double-speed operation, with a tandem pump. Installed power 5.5 kW.

**32. We provide service and diagnostics of hydraulic systems**





**HYDROMA, spol. s r. o.**  
Vlčnovská 2477  
688 01 Uherský Brod  
Czech Republic  
tel./fax: +420 572 637 796  
GSM: +420 724 149 326  
fax: +420 572 637 729  
e-mail: hydroma@hydroma.cz  
[www.hydroma.cz](http://www.hydroma.cz)

**HYDROMA SK, spol. s r. o.**  
Nová 134  
017 01 Považská Bystrica  
Slovak Republic  
tel.: +421 424 261 171  
+421 424 261 172  
fax: +421 424 261 170  
e-mail: hydroma@hydroma.sk  
[www.hydroma.sk](http://www.hydroma.sk)

**HIDROMA SISTEMS Sp. z o.o.**  
ul. Legnicka 84-86  
41-500 Chorzów  
Poland  
tel./fax: +48 (32) 24 11 821  
e-mail: info@hidromasistems.pl  
[www.hidromasistems.pl](http://www.hidromasistems.pl)

Partner:  
**HANSA-TMP S.r.l.**  
Via M. L. King, 6  
41122 - Modena (ITALY)  
Tel: +39 059 415 711  
Fax: +39 059 415 729  
+39 059 415 730  
e-mail: hansatmp@hansatmp.it  
[www.hansatmp.it](http://www.hansatmp.it)

Distributor: